

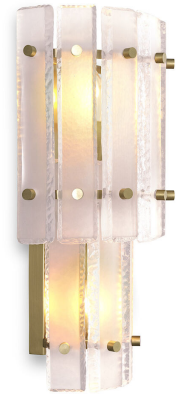


EICHHOLTZ

EST. 1992

SPECIFICATION SHEET

Item no.	115669
Item description	Wall Lamp Blason Double antique brass finish Antique brass finish frosted glass
Suitable for	Indoor use/dry locations only
Net weight (kg)	6
Net weight (lbs)	13.22



DIMENSIONS

Dimensions (cm)	W. 24 D. 14.5 H. 43 cm
Dimensions (inch)	W. 9.45" D. 5.71" H. 16.93"
Wall/ceiling plate dimensions (cm)	L. 11 H. 35 cm
Wall/ceiling plate dimensions (inch)	L. 4.33" H. 13.78"
Wire length (cm)	20
Wire length (inch)	7.87

MATERIALS

115669	Wall Lamp Blason Double antique brass finish Iron Glass
--------	--

SPECIFICATIONS

Assembly required?	This product requires assembly
Lamp holder	E14
Lamp holder qty	2
Voltage	220 - 240 Volt
Rec. bulb wattage (max)	5 watt
Wattage (max)	40 watt
Light source	Not included
Dimmer	Dimmable, dimmer not included
Wire	2 core + earth wire (0,75mm ²)
Test certificates	CE CB Pass 2022
Hanging method	Direct

LOGISTIC INFORMATION

115669	Wall Lamp Blason Double antique brass finish 1 pc(s)
Carton length (m)	0.2
Carton width (m)	0.42
Carton height (m)	0.57
Carton cubage (m)	0.04788
Gross weight (kg)	7.2
HS code EU	94051950
Carton length (inch)	7.87
Carton width (inch)	16.54



E I C H H O L T Z

EST. 1992

SPECIFICATION SHEET

Carton height (inch)	22.44
Carton cubage (ft)	1.69087
Gross weight (lbs)	15.87
HS code USA	9405118010
Country of origin	China