

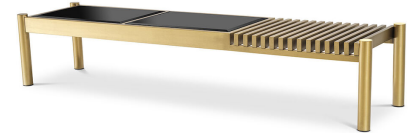


EICHHOLTZ

EST. 1992

## SPECIFICATION SHEET

Item no.	115270
Item description	Coffee Table Bibi brushed brass finish Brushed brass finish   black bevelled glass
Suitable for	Indoor use/dry locations only
Net weight (kg)	30.4
Net weight (lbs)	67



## DIMENSIONS

Dimensions (cm)	L. 180   W. 44   H. 35.5 cm
Dimensions (inch)	L. 70.87"   W. 17.32"   H. 13.98"

## MATERIALS

115270A	Coffee Table Bibi brushed brass finish - Stand Stainless steel
Stainless steel grade	SAE 201
115270B	Coffee Table Bibi brushed brass fin - Black glass Glass

## SPECIFICATIONS

Assembly required?	No assembly required
Maximum weight load (kg)	75
Maximum weight load (lbs)	165.35

## LOGISTIC INFORMATION

115270A	Coffee Table Bibi brushed brass finish - Stand   1 pc(s)
Carton length (m)	1.84
Carton width (m)	0.48
Carton height (m)	0.39
Carton cubage (m)	0.34445
Gross weight (kg)	17
HS code EU	94032080
Carton length (inch)	72.44
Carton width (inch)	18.9
Carton height (inch)	15.35
Carton cubage (ft)	12.16414
Gross weight (lbs)	37.47
HS code USA	9403901090
Country of origin	China
115270B	Coffee Table Bibi brushed brass fin - Black glass   1 pc(s)
Carton length (m)	0.61
Carton width (m)	0.42
Carton height (m)	0.12
Carton cubage (m)	0.03074



E I C H H O L T Z

EST. 1992

## SPECIFICATION SHEET

Gross weight (kg)	9
HS code EU	70033000
Carton length (inch)	24.02
Carton width (inch)	16.54
Carton height (inch)	4.72
Carton cubage (ft)	1.08557
Gross weight (lbs)	19.84
HS code USA	7006004050
Country of origin	China