



# KORALTURK

---

## B i l l i a r d s

DIJITAL CATALOG  
2026

[www.koralturk.com.tr](http://www.koralturk.com.tr)

## Koraltürk Billiards

Koraltürk Billiards is an engineering and manufacturing company specialized in the production of billiard tables, founded in 1991 and currently operated under second-generation family management. Since its establishment, the company has adopted the principle of developing high-standard products for national and international markets by combining design, R&D, industrial production, and quality assurance processes under one roof.

Our modern production facilities located in Antalya feature an integrated structure encompassing metal processing, woodworking, surface finishing, painting, assembly, and final inspection lines. Conducting all stages of production in-house ensures full traceability and standardized quality criteria at every step of the process. This structure also provides flexible manufacturing capabilities and offers significant advantages in project-based custom solutions.

The product portfolio of Koraltürk Billiards includes professional billiard tables, outdoor billiard tables, hybrid solutions convertible into dining tables, and custom-designed models for architectural projects. All products are designed with durability, longevity, functionality, and aesthetics considered together, offering solutions for modern living spaces, residential projects, hotels, villas, and social venues. Our design philosophy goes beyond manufacturing a gaming product; it focuses on creating items that become a natural part of living spaces and complement interior furniture and architectural identity.

Our corporate management approach is based on the principles of sustainable production, ethical trade, customer satisfaction, and long-term business partnerships. We act with transparency and trust in all processes extending from the supply chain to after-sales support. Together with our business partners operating in domestic and international markets, we aim to grow collaboratively and further develop our production culture on a global scale.

Today, Koraltürk Billiards continues to strengthen its position in the global market with its production capacity, engineering infrastructure, innovative product development approach, and strong corporate structure shaped by its family-owned company culture. Our company carries its knowledge and experience into the future with the vision of being a reliable and innovative brand in its sector.



## MILANO

Milano is a hybrid model designed to combine multi-purpose use with aesthetic integrity in living spaces. It allows you to use both a dining table and a billiard table function in a single product. Thanks to its top-cover system, switching between the two modes of use is practical and fast; this allows the experience of play and socialization to coexist without interrupting the flow of daily life.

Its balanced body structure and strong leg design support table stability during use. With its modern and minimalist design language, it offers a timeless aesthetic that can harmonize with a wide variety of interior styles.

### Technical Specifications

Title	Details
Overall Dimensions	• 5 Ft. 107 x 180.5 cm
	• 6 Ft. 117 x 200.5 cm
	• 7 Ft. 132.5 x 231.5 cm
	• 7.5 Ft. 138.5 x 243.5 cm
Playing Area Dimensions	• 5 Ft. 73.5 x 147 cm
	• 6 Ft. 83.5 x 167 cm
	• 7 Ft. 99 x 198 cm
	• 7.5 Ft. 105 x 210 cm
Playing Area System	• Sla-Tech
Billiard Cushion	• K-66 Cushion Profile
Assembly System	• RTA Installation
Production Time	• 25 - 35 days





## PEGASUS

Pegasus is a versatile billiard-dining table designed to meet the evolving needs of modern living spaces.

With its balanced proportions and minimalist design language, it offers comfortable use both as a dining table and as a billiard table.

Its functional convertible structure elevates the product beyond being merely a game table, turning it into a natural part of everyday life.

Bringing together different usage scenarios within a single table, Pegasus ensures efficient use of space while maintaining aesthetic integrity.

With its timeless form, clean lines, and meticulously considered details, it harmonizes perfectly with modern, contemporary, and luxury interiors.

It is designed to offer both a visual and functional solution in homes, offices, and social spaces.

### Technical Specifications

Title	Details
Overall Dimensions	• 5 Ft. 107 x 180.5 cm
	• 6 Ft. 117 x 200.5 cm
	• 7 Ft. 132.5 x 231.5 cm
	• 7.5 Ft. 138.5 x 243.5 cm
Playing Area Dimensions	• 5 Ft. 73.5 x 147 cm
	• 6 Ft. 83.5 x 167 cm
	• 7 Ft. 99 x 198 cm
	• 7.5 Ft. 105 x 210 cm
Playing Area System	• Sla-Tech
Billiard Cushion	• K-66 Cushion Profile
Assembly System	• RTA Installation
Production Time	• 25 - 35 days







## ARTEMIS

Artemis is a distinctive table model that expresses its billiards-oriented character through a strong and clearly defined design language. Its sharp lines, balanced proportions, and architectural leg structure create a confident and prestigious presence within any space.

Its simple yet assertive form, combined with uncluttered surfaces free from unnecessary details, elevates Artemis beyond being merely a game table and turns it into a design object with high aesthetic value. Its construction supports billiards standards while preserving aesthetic integrity and offering a comfortable and fluid user experience.

Thanks to its timeless design approach, contemporary material character, and strong geometry, it blends naturally into modern and luxury interiors. Positioned as a sophisticated solution, Artemis complements the architectural language of homes, offices, and exclusive social spaces while creating value through its function.

### Technical Specifications

Title	Details
Overall Dimensions	• 5 Ft. 107 x 180.5 cm
	• 6 Ft. 117 x 200.5 cm
	• 7 Ft. 132.5 x 231.5 cm
	• 7.5 Ft. 138.5 x 243.5 cm
Playing Area Dimensions	• 5 Ft. 73.5 x 147 cm
	• 6 Ft. 83.5 x 167 cm
	• 7 Ft. 99 x 198 cm
	• 7.5 Ft. 105 x 210 cm
Playing Area System	• Sla-Tech
Billiard Cushion	• K-66 Cushion Profile
Assembly System	• RTA Installation
Production Time	• 25 - 35 days





## VALENTINO

Valentino is a timeless Koraltürk design that brings together classic furniture aesthetics with modern billiards engineering, offering a multifunctional solution. Its finely proportioned, hand-crafted turned legs give the table an elegant and sophisticated character, forming a seamless unity with the wooden body.

Thanks to its specially designed top-cover system, Valentino can also be used as a refined dining table. This transformation provides both an aesthetic and functional solution for living spaces, turning the table into not only a gaming product but also a high-end piece of furniture.

### Technical Specifications

Title	Details
Overall Dimensions	• 5 Ft. 107 x 180.5 cm
	• 6 Ft. 117 x 200.5 cm
	• 7 Ft. 132.5 x 231.5 cm
	• 7.5 Ft. 138.5 x 243.5 cm
Playing Area Dimensions	• 5 Ft. 73.5 x 147 cm
	• 6 Ft. 83.5 x 167 cm
	• 7 Ft. 99 x 198 cm
	• 7.5 Ft. 105 x 210 cm
Playing Area System	• Sla-Tech
Billiard Cushion	• K-66 Cushion Profile
Assembly System	• RTA Installation
Production Time	• 25 - 35 days







## HELLIOS

Helios is a prestigious, multi-purpose design that combines the craftsmanship of classical turned legs with modern billiards engineering.

The gold-toned, hand-crafted turned legs lend the table a sculptural elegance, while its robust structure ensures perfect stability in both billiard and dining table use.

Thanks to its specially designed dining-top system, Helios can be transformed into an elegant billiard-dining table within seconds. The seamless harmony between the natural wooden body and the table-top surfaces turns Helios into not only a functional product, but also a high-end piece of furniture.

### Technical Specifications

Title	Details
Overall Dimensions	• 5 Ft. 107 x 180.5 cm
	• 6 Ft. 117 x 200.5 cm
	• 7 Ft. 132.5 x 231.5 cm
	• 7.5 Ft. 138.5 x 243.5 cm
Playing Area Dimensions	• 5 Ft. 73.5 x 147 cm
	• 6 Ft. 83.5 x 167 cm
	• 7 Ft. 99 x 198 cm
	• 7.5 Ft. 105 x 210 cm
Playing Area System	• Sla-Tech
Billiard Cushion	• K-66 Cushion Profile
Assembly System	• RTA Installation
Production Time	• 25 - 35 days





## DUBAİ

Dubai brings a sophisticated aesthetic to living spaces through the combination of elegantly turned leg design and a modern body form. The rounded leg structure reinterprets the language of classical furniture with a contemporary approach. Standing out with its color harmony and decorative details, Model Dubai is a special billiard table designed for home use, offering elegance, comfort, and gameplay enjoyment together. With various color and finish options, it adapts easily to personal interior styles.

### Technical Specifications

Title	Details
Overall Dimensions	• 5 Ft. 107 x 180.5 cm
	• 6 Ft. 117 x 200.5 cm
	• 7 Ft. 132.5 x 231.5 cm
	• 7.5 Ft. 138.5 x 243.5 cm
Playing Area Dimensions	• 5 Ft. 73.5 x 147 cm
	• 6 Ft. 83.5 x 167 cm
	• 7 Ft. 99 x 198 cm
	• 7.5 Ft. 105 x 210 cm
Playing Area System	• Sla-Tech
Billiard Cushion	• K-66 Cushion Profile
Assembly System	• RTA Installation
Production Time	• 25 - 35 days







## TRIBECA

Tribeca is a multifunctional billiard-dining table that brings function and design together in a well-balanced form. Its simple yet distinctive design language, supported by clear lines and balanced proportions, creates a strong visual impact within any space.

Its sculptural form and carefully designed details elevate Tribeca beyond being merely a functional product, transforming it into a design-oriented living object. The convertible structure that allows seamless transition between billiard and dining modes offers versatile use without compromising aesthetic integrity.

With its timeless lines, clean surface transitions, and contemporary material character, it blends naturally with modern and luxury interiors. Tribeca is positioned as a sophisticated solution that stands out with its design and creates value through its function in homes, offices, and social spaces.

### Technical Specifications

Title	Details
Overall Dimensions	• 5 Ft. 107 x 180.5 cm
	• 6 Ft. 117 x 200.5 cm
	• 7 Ft. 132.5 x 231.5 cm
	• 7.5 Ft. 138.5 x 243.5 cm
Playing Area Dimensions	• 5 Ft. 73.5 x 147 cm
	• 6 Ft. 83.5 x 167 cm
	• 7 Ft. 99 x 198 cm
	• 7.5 Ft. 105 x 210 cm
Playing Area System	• Sla-Tech
Billiard Cushion	• K-66 Cushion Profile
Assembly System	• RTA Installation
Production Time	• 25 - 35 days





## LİVA

LİVA has been developed to create a balanced and calm visual impression in modern interiors through a design language free from sharp edges and characterized by smooth, flowing transitions. The continuity between the body and leg forms gives the table a soft design character while presenting a refined stance that does not disrupt architectural integrity.

In the design, transitions between surfaces, edge proportions, and the continuity of form have been carefully considered, with the aim of enabling the product to play a complementary rather than dominant role within the space. This approach transforms Model LİVA into not only a billiard table, but also a design object that harmonizes with modern living environments.

### Technical Specifications

Title	Details
Overall Dimensions	• 5 Ft. 107 x 180.5 cm
	• 6 Ft. 117 x 200.5 cm
	• 7 Ft. 132.5 x 231.5 cm
	• 7.5 Ft. 138.5 x 243.5 cm
Playing Area Dimensions	• 5 Ft. 73.5 x 147 cm
	• 6 Ft. 83.5 x 167 cm
	• 7 Ft. 99 x 198 cm
	• 7.5 Ft. 105 x 210 cm
Playing Area System	• Sla-Tech
Billiard Cushion	• K-66 Cushion Profile
Assembly System	• RTA Installation
Production Time	• 25 - 35 days







## BURJ KHALİFA

Burj Khalifa is a special billiard table inspired by the iconic architecture of the Burj Khalifa in Dubai. In the leg design, multi-part cylindrical forms reflecting the tower's layered vertical rise have been used. This approach gives the product a sculptural presence and a strong architectural character.

The horizontal lines and detailing in the body design emphasize a modern design language, while the structural configuration has been developed with the goal of providing high stability and long-lasting use.

### Technical Specifications

Title	Details
Overall Dimensions	• 5 Ft. 107 x 180.5 cm
	• 6 Ft. 117 x 200.5 cm
	• 7 Ft. 132.5 x 231.5 cm
	• 7.5 Ft. 138.5 x 243.5 cm
Playing Area Dimensions	• 5 Ft. 73.5 x 147 cm
	• 6 Ft. 83.5 x 167 cm
	• 7 Ft. 99 x 198 cm
	• 7.5 Ft. 105 x 210 cm
Playing Area System	• Sla-Tech
Billiard Cushion	• K-66 Cushion Profile
Assembly System	• RTA Installation
Production Time	• 25 - 35 days





## 360 LETONYA

Letonya is designed to combine multi-purpose use and superior comfort within living spaces. Thanks to its specially developed 360° rotating mechanism, the table transforms effortlessly from a dining table appearance into a billiard table.

Its solid body structure, support leg system engineered to high standards, and well-balanced frame construction reliably provide the stability required during gameplay. Its modern and elegant design language harmonizes gracefully with both residential interiors and prestigious commercial spaces.

### Technical Specifications

Title	Details
Overall Dimensions	• 7 Ft. 142 x 242 cm
Playing Area Dimensions	• 7 Ft. 99 x 198 cm
Playing Area System	• Sla-Tech
Billiard Cushion	• K-66 Cushion Profile
Assembly System	• Professional Installation
Production Time	• 60 - 90 days







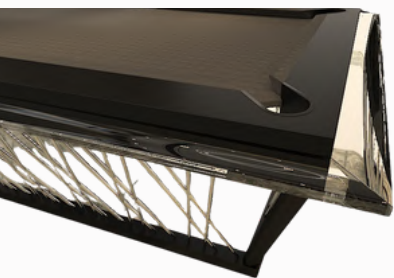
## SAGALASOS

Sagalasos is defined by a design in which the glass detail running along the table's top rail is combined with a supporting system made of chrome rods in the lower section. The glass perimeter band on the upper frame gives the product a distinguished visual character, while the chrome elements below complete the holistic aesthetic language of the design.

The coexistence of these two primary design elements gives Model Sagalassos a contemporary and distinctive design identity.

### Technical Specifications

Title	Details
Overall Dimensions	• 7 Ft. 142 x 242 cm
Playing Area Dimensions	• 7 Ft. 99 x 198 cm
Playing Area System	• Sla-Tech
Billiard Cushion	• K-66 Cushion Profile
Assembly System	• Professional Installation
Production Time	• 60 - 90 days





## ARISTO

ARISTO is a high-end billiard table that brings together luxury design and engineering craftsmanship. Its fully chrome body structure provides both a visually powerful presence and long-lasting durability that preserves its form for many years. The fluid, sculptural leg form creates an elegant silhouette compatible with modern architectural interiors while also offering superior stability. Its precisely engineered metal construction is designed to deliver vibration-free and well-balanced playing performance. With its premium material quality, refined details, and strong character, ARISTO is an exclusive choice for private garages, luxury villas, and prestigious living spaces.

### Technical Specifications

Title	Details
Overall Dimensions	• 7 Ft. 142 x 242 cm
Playing Area Dimensions	• 7 Ft. 99 x 198 cm
Playing Area System	• Slate
Billiard Cushion	• K-66 Cushion Profile
Assembly System	• Production Time
Production Time	• 120 - 150 days







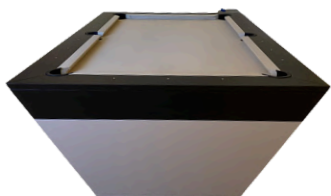
## KAPLANKAYA

Kaplankaya reflects a strong design approach inspired by modern architecture, with its sharp geometry and sculptural body form. The broad surfaces and well-balanced mass distribution give the table both a strong visual presence and superior playing stability.

The body structure shaped with minimal lines presents a simple yet assertive stance within the space, while its construction in accordance with professional playing standards offers a smooth, balanced, and consistent playing experience. Kaplankaya is an exclusive billiard table designed for luxury living spaces, enhancing the overall character of its environment.

### Technical Specifications

Title	Details
Overall Dimensions	• 7 Ft. 132.5 x 231.5 cm
	• 7.5 Ft. 138.5 x 243.5 cm
	• 8 Ft. 145.5 x 257.5 cm
Playing Area Dimensions	• 7 Ft. 99 x 198 cm
	• 7.5 Ft. 105 x 210 cm
	• 8 Ft. 112 x 224 cm
Playing Area System	• Slate
Billiard Cushion	• K-66 Cushion Profile
Assembly System	• Professional Installation
Production Time	• 45 - 65 days





## ZEUS

Zeus is a special collection piece where master craftsmanship and classical luxury design meet at the highest level. The hand-carved legs and the finely detailed engravings on the body, crafted entirely by skilled artisans, give the table a strong character and an artistic identity.

The well-balanced construction of the body and the premium materials used ensure both aesthetic value and long-lasting durability. Inspired by classical architectural details, Zeus is not merely a billiard table, but a prestigious design object that takes center stage in any interior.

### Technical Specifications

Title	Details
Overall Dimensions	• 7 Ft. 132.5 x 231.5 cm
	• 7.5 Ft. 138.5 x 243.5 cm
	• 8 Ft. 145.5 x 257.5 cm
Playing Area Dimensions	• 7 Ft. 99 x 198 cm
	• 7.5 Ft. 105 x 210 cm
	• 8 Ft. 112 x 224 cm
Playing Area System	• Slate
Billiard Cushion	• K-66 Cushion Profile
Assembly System	• Professional Installation
Production Time	• 45 - 65 days







## Herakles

Herakles is a distinctive billiard table that reinterprets the concept of classical luxury with its powerful stance and majestic design language. The gold-leaf, hand-carved leg structure and the wavy body details reflect the finest examples of master craftsmanship.

The harmony between the rich dark body color and gold tones creates a sculptural effect within the space, while the robust construction provides the high level of stability required for professional playing performance.

### Technical Specifications

Title	Details
Overall Dimensions	• 7 Ft. 132.5 x 231.5 cm
	• 7.5 Ft. 138.5 x 243.5 cm
	• 8 Ft. 145.5 x 257.5 cm
Playing Area Dimensions	• 7 Ft. 99 x 198 cm
	• 7.5 Ft. 105 x 210 cm
	• 8 Ft. 112 x 224 cm
Playing Area System	• Slate
Billiard Cushion	• K-66 Cushion Profile
Assembly System	• Professional Installation
Production Time	• 45 - 65 days





## MIOR

Mior is a distinctive billiard table that brings together the elegance of craftsmanship with a modern sense of luxury. The hand-carved details on the body reflect the fine workmanship of master artisans while giving the design a characteristic identity.

Its transparent glass legs with gold-accented details give the table a sense of lightness and create a sculptural presence within the space. This leg design, which blends aesthetics with engineering, offers superior strength and stability.

With its refined ornaments integrated with classical lines, exclusive color combinations, and strong stance, Model Mior is an exceptional design created for luxury residences, prestigious social venues, and special projects.

### Technical Specifications

Title	Details
Overall Dimensions	• 7 Ft. 132.5 x 231.5 cm
	• 7.5 Ft. 138.5 x 243.5 cm
	• 8 Ft. 145.5 x 257.5 cm
Playing Area Dimensions	• 7 Ft. 99 x 198 cm
	• 7.5 Ft. 105 x 210 cm
	• 8 Ft. 112 x 224 cm
Playing Area System	• Slate
Billiard Cushion	• K-66 Cushion Profile
Assembly System	• Professional Installation
Production Time	• 45 - 65 days







## HATTANA

HATTANA, as one of Koraltürk Billiards' special designs, brings together the timeless aesthetics of classic billiard tables with modern production standards. Developed for luxury living spaces and distinguished projects, this model establishes a natural harmony with its surroundings through its balanced proportions and minimalist design language.

Its structure, shaped with a focus on playing performance and long-lasting use, offers a wide range of applications from recreational use to professional expectations. The material selection and production quality are aimed at ensuring that HATTANA preserves its form and performance for many years.

### Technical Specifications

Title	Details
Overall Dimensions	• 8 Ft. 145.5 x 257.5 cm • 9 Ft. 160.5 x 287.5 cm
Playing Area Dimensions	• 8 Ft. 112 x 224 cm • 9 Ft. 127 x 254 cm
Playing Area System	• Slate
Billiard Cushion	• K-66 Cushion Profile
Assembly System	• Professional Installation
Production Time	• 45 - 65 days





## TROYA

Troya is a professional billiard table that combines pure playing performance with a modern and powerful design. Its well-balanced body structure and clean lines give the table both a sporty and architectural presence.

The playing field designed to professional dimensions, together with its high-precision cushion system and stable construction, delivers a tournament-level playing experience. With its simple form and timeless design, Troya is not only a game table but also a strong object that enhances the character of the space in which it stands.

### Technical Specifications

Title	Details
Overall Dimensions	• 8 Ft. 145.5 x 257.5 cm • 9 Ft. 160.5 x 287.5 cm
Playing Area Dimensions	• 8 Ft. 112 x 224 cm • 9 Ft. 127 x 254 cm
Playing Area System	• Slate
Billiard Cushion	• K-66 Cushion Profile
Assembly System	• Professional Installation
Production Time	• 45 - 65 days







## LEGNORA

Legnora is a distinctive billiard table that unites the timeless character of natural wood with a fluid and sculptural design language. Its softly flowing form and organic leg structure give the model a strong aesthetic presence while creating a warm and prestigious atmosphere within the space.

The wooden body, shaped with the precision of fine craftsmanship, presents the classical billiards tradition through a contemporary interpretation. Its well-balanced construction and configuration supporting professional playing standards make Legnora not only a visual object, but also a high-performance game table. Legnora is a sophisticated and enduring design solution created for luxury hotel lobbies, private clubs, and exclusive living spaces, adding long-lasting value through the use of natural materials.

### Technical Specifications

Title	Details
Overall Dimensions	• 8 Ft. 145.5 x 257.5 cm • 9 Ft. 160.5 x 287.5 cm
Playing Area Dimensions	• 8 Ft. 112 x 224 cm • 9 Ft. 127 x 254 cm
Playing Area System	• Slate
Billiard Cushion	• K-66 Cushion Profile
Assembly System	• Professional Installation
Production Time	• 45 - 65 days





## MILLENNIUM

Millennium is a special design that reflects the foundations of our brand's design and manufacturing approach, with a well-established heritage dating back to 1993. Developed on the basis of the classical billiards tradition, this model has been shaped with an engineering approach that prioritizes durability, structural balance, and playing performance. Thanks to its robust construction and balanced proportions, it has remained a reference model in our product portfolio for many years. Today, it has been reinterpreted with modern production techniques and contemporary material standards, and is positioned as a timeless and prestigious model that preserves its original design identity.

### Technical Specifications

Title	Details
Overall Dimensions	• 8 Ft. 145.5 x 257.5 cm • 9 Ft. 160.5 x 287.5 cm
Playing Area Dimensions	• 8 Ft. 112 x 224 cm • 9 Ft. 127 x 254 cm
Playing Area System	• Slate
Billiard Cushion	• K-66 Cushion Profile
Assembly System	• Professional Installation
Production Time	• 45 - 65 days







## LUXURY CAGE

Luxury Cage is a premium billiard table that brings together Koraltürk's approach to design, engineering, and craftsmanship at the highest level. Its distinctive body structure, which creates the effect of an architectural sculpture, goes beyond the classical billiard table form and becomes a powerful design object positioned at the center of the space. The stainless-steel columns and characteristic "cage" construction not only deliver visual grandeur, but also provide high stability and rigidity in line with professional standards. Its well-balanced and heavy body structure minimizes vibration, offering superior playing precision. With a playing surface designed to professional dimensions, a cushion system suitable for tournament-level performance, and an impeccably flat surface quality, Luxury Cage is positioned in the top segment in terms of performance. Selected materials, glossy surface details, and high craftsmanship quality clearly distinguish this model from an ordinary billiard table.

### Technical Specifications

Title	Details
Overall Dimensions	<ul style="list-style-type: none"> <li>• 8 Ft. 145.5 x 257.5 cm</li> <li>• 9 Ft. 160.5 x 287.5 cm</li> </ul>
Playing Area Dimensions	<ul style="list-style-type: none"> <li>• 8 Ft. 112 x 224 cm</li> <li>• 9 Ft. 127 x 254 cm</li> </ul>
Playing Area System	• Slate
Billiard Cushion	• K-66 Cushion Profile
Assembly System	• Professional Installation
Production Time	• 45 - 65 days





## TRAPEZA

Trapeza brings together professional billiards performance with a modern design language through its strong geometry and well-balanced mass distribution. The refined metal details used on the black body give the table a sophisticated and prestigious character, while its simple form allows it to harmonize seamlessly with its surroundings. Its body structure, manufactured with high precision, keeps stability at the highest level, delivering a consistent and reliable playing experience with every shot. Trapeza is not merely a billiard table; it is a powerful focal point that completes the design of architectural interiors.

### Technical Specifications

Title	Details
Overall Dimensions	• 8 Ft. 145.5 x 257.5 cm • 9 Ft. 160.5 x 287.5 cm
Playing Area Dimensions	• 8 Ft. 112 x 224 cm • 9 Ft. 127 x 254 cm
Playing Area System	• Slate
Billiard Cushion	• K-66 Cushion Profile
Assembly System	• Professional Installation
Production Time	• 45 - 65 days







## ELİT

Elit is a premium-segment billiard table that combines modern architectural lines with a robust construction structure. The supporting leg system in cylindrical column form and the detailed surface workmanship provide the product with both aesthetic value and high stability.

Thanks to its engineering-oriented body design, a vibration-free and well-balanced playing surface is achieved, offering a consistent and comfortable playing experience in line with professional standards.

### Technical Specifications

Title	Details
Overall Dimensions	• 8 Ft. 145.5 x 257.5 cm • 9 Ft. 160.5 x 287.5 cm
Playing Area Dimensions	• 8 Ft. 112 x 224 cm • 9 Ft. 127 x 254 cm
Playing Area System	• Slate
Billiard Cushion	• K-66 Cushion Profile
Assembly System	• Professional Installation
Production Time	• 45 - 65 days





## MAÇA

Maca stands out with its iconic design, named after the characteristic spade form featured on the front section. Two distinct leg designs with different geometries give the table both a strong identity and a sculptural appearance.

Thanks to its engineering-based chassis structure, it provides high stability and a precisely leveled playing surface. With its modern lines and balanced proportions, it is an ideal choice for luxury residences, private game rooms, and prestigious social spaces. Adopting a simple yet assertive approach in its design details, Model Maca is not just a billiard table, but a design object that creates a focal point within the space in which it is placed.

### Technical Specifications

Title	Details
Overall Dimensions	• 8 Ft. 145.5 x 257.5 cm • 9 Ft. 160.5 x 287.5 cm
Playing Area Dimensions	• 8 Ft. 112 x 224 cm • 9 Ft. 127 x 254 cm
Playing Area System	• Slate
Billiard Cushion	• K-66 Cushion Profile
Assembly System	• Professional Installation
Production Time	• 45 - 65 days







## LİDYA

Lidya is designed with a primary focus on high stability and flawless playing performance. Its balanced body proportions and robust leg structure distribute all loads evenly during play, ensuring that the table remains steady and free from vibration.

The body form with clean, defined lines gives the table a strong character, while its simple and timeless design language allows it to adapt easily to different architectural concepts. Its solid construction is designed to preserve its form and playing accuracy even under long-term and intensive use.

The playing field designed to professional dimensions offers a superior billiards experience by providing consistent ball movements and balanced rebounds. This model offers both a functional and aesthetic solution for private residences, hotels, social facilities, and prestigious commercial spaces.

With its strong stance, clear design lines, and professional playing feel, this billiard table represents Koraltürk's commitment to quality and design.

### Technical Specifications

Title	Details
Overall Dimensions	• 8 Ft. 145.5 x 257.5 cm • 9 Ft. 160.5 x 287.5 cm
Playing Area Dimensions	• 8 Ft. 112 x 224 cm • 9 Ft. 127 x 254 cm
Playing Area System	• Slate
Billiard Cushion	• K-66 Cushion Profile
Assembly System	• Professional Installation
Production Time	• 45 - 65 days





## ASPENDOS

Aspendos is designed with the intensive usage requirements of billiard clubs and the expectations of professional play in mind. Its robust body structure, balanced leg geometry, and long-lasting material combination provide a high-performance and consistent playing experience in club environments.

The cushion system compliant with professional standards and the precisely measured playing surface ensure tournament-level playability. Durable exterior surfaces and ease of maintenance have been developed with the goal of long-term use and low operating costs for commercial venues.

### Technical Specifications

Title	Details
Overall Dimensions	• 8 Ft. 145.5 x 257.5 cm • 9 Ft. 160.5 x 287.5 cm
Playing Area Dimensions	• 8 Ft. 112 x 224 cm • 9 Ft. 127 x 254 cm
Playing Area System	• Slate
Billiard Cushion	• K-66 Cushion Profile
Assembly System	• Professional Installation
Production Time	• 45 - 65 days







## PERGE

Perge has been developed based on a classical design approach, featuring an elegant turned-leg form and well-balanced table proportions.

Its design language, which highlights spatial aesthetics, combines with a robust body structure to provide a long-lasting and reassuring user experience. The balanced leg geometry and stable construction minimize vibration during play, ensuring comfortable playability. Inspired by classical furniture forms, the leg design transforms Perge from being merely a piece of gaming equipment into a decorative element that enhances the space in which it is placed.

### Technical Specifications

Title	Details
Overall Dimensions	• 8 Ft. 145.5 x 257.5 cm • 9 Ft. 160.5 x 287.5 cm
Playing Area Dimensions	• 8 Ft. 112 x 224 cm • 9 Ft. 127 x 254 cm
Playing Area System	• Slate
Billiard Cushion	• K-66 Cushion Profile
Assembly System	• Professional Installation
Production Time	• 45 - 65 days





## Classic Perge Snooker

Classic Perge Snooker is a snooker table model that stands out with its timeless classical lines and well-balanced proportions. Its traditional design language is combined with professional playing dimensions and an engineering-oriented construction to deliver consistent playing performance.

The pocket and cushion geometry is optimized specifically for snooker, ensuring controlled shots, accurate ball movement, and high playing precision. With its classical appearance and professional standards, Classic Perge Snooker is an ideal choice for distinguished game rooms and prestigious venues.

### Technical Specifications

Title	Details
Overall Dimensions	• 8 Ft. 145.5 x 257.5 cm
	• 9 Ft. 160.5 x 287.5 cm
	• 10 Ft. 175.5 x 317.5 cm
	• 12 Ft. 204 x 382 cm
Playing Area Dimensions	• 8 Ft. 112 x 224 cm
	• 9 Ft. 127 x 254 cm
	• 10 Ft. 142 x 284 cm
	• 12 Ft. 178x 356 cm
Playing Area System	• Slate
Billiard Cushion	• L-77 Cushion Profile
Assembly System	• Professional Installation
Production Time	• 45 - 65 days







## NOVA

Nova is a billiard table developed for outdoor use, featuring a simple and modern design approach. Its rounded body structure and leg form strengthen the overall design integrity of the product while creating a look that harmonizes with contemporary outdoor arrangements.

Designed for use in spaces such as gardens, terraces, and poolside areas, Model Nova is positioned as a strong design element within its environment thanks to its form that aligns with architectural aesthetics.

### Technical Specifications

Title	Details
Overall Dimensions	• 7 Ft. 131.5 x 230.5 cm
Playing Area Dimensions	• 7 Ft. 99 x 198 cm
Playing Area System	• Slate
Billiard Cushion	• K-66 Cushion Profile
Assembly System	• RTA Installation
Production Time	• 25 - 35 days





## TRUVA

Truva is an outdoor billiard table developed for exterior use and created with a strong design approach characterized by sharp lines. Its clear edge geometry, distinctive corner design, and angled leg structure present a highly defined design language that harmonizes with modern architecture.

### Technical Specifications

Title	Details
Overall Dimensions	• 7 Ft. 131.5 x 230.5 cm
Playing Area Dimensions	• 7 Ft. 99 x 198 cm
Playing Area System	• Slate
Billiard Cushion	• K-66 Cushion Profile
Assembly System	• RTA Installation
Production Time	• 25 - 35 days







## PEGASUS AIR HOCKEY

Pegasus Air Hockey is an air hockey table that combines high playing performance with modern design. Thanks to its dual air-motor system, it provides a homogeneous air distribution across the playing surface, allowing the pucks to move quickly, smoothly, and with minimal friction. In this way, it delivers a dynamic and enjoyable gaming experience.

### Technical Specifications

Title	Details
Overall Dimensions	• 6 Ft. 117 x 200.5 cm • 7 Ft. 132.5 x 231.5 cm
Playing Area System	• Air Hockey Surface
Assembly System	• RTA Installation
Production Time	• 25 - 35 days





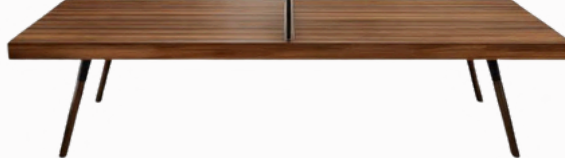
## SINGAPORE

Singapore is a table tennis table that stands out with its simple and elegant design, harmonizing seamlessly with modern interiors. Its slim tabletop and angled wooden leg geometry give the product both a refined and lightweight appearance.

By combining the functionality of table tennis with furniture aesthetics, it can serve as both a decorative design object and an enjoyable gaming unit in residences, offices, and social spaces. With its minimal lines, well-balanced supporting system, and high-quality surface workmanship, it is designed to preserve its form and aesthetic appearance for many years.

### Technical Specifications

Title	Details
Overall Dimensions	• 130 x 230 cm • 152.5 x 274 cm
Assembly System	• RTA Installation
Production Time	• 25 - 35 days







## CAPRI

Capri is a distinctive table tennis table that stands out with its modern and elegant lines. The diagonally arranged wood-patterned playing surface adds a strong character and a unique aesthetic to the design. Its wide and perfectly smooth surface geometry supports a fluent playing tempo, while the slim frame details preserve the aesthetic quality of interior furniture. It is designed to function both as a decorative design element and as an entertainment product, suitable for use in living spaces as well as social environments.

### Technical Specifications

Title	Details
Overall Dimensions	130 x 230 cm 152.5 x 274 cm
Assembly System	• RTA Installation
Production Time	• 25 - 35 days





## LEON

Leon is a foosball table model that stands out with its aesthetic form and solid construction, harmonizing with modern interior designs. Its wooden leg structure and angled supporting design provide the product with both visual lightness and high stability.

### Technical Specifications

Title	Details
Overall Dimensions	• 77 x 135 cm
Assembly System	• RTA Installation
Production Time	• 25 - 35 days







## REKA

Reka is a standard foosball table model developed for intensive use, featuring a durable body structure and robust leg construction. Thanks to its height-adjustable leg leveling system, it adapts perfectly to the floor and minimizes shaking during play.

### Technical Specifications

Title	Details
Overall Dimensions	• 77 x 135 cm
Assembly System	• RTA Installation
Production Time	• 25 - 35 days



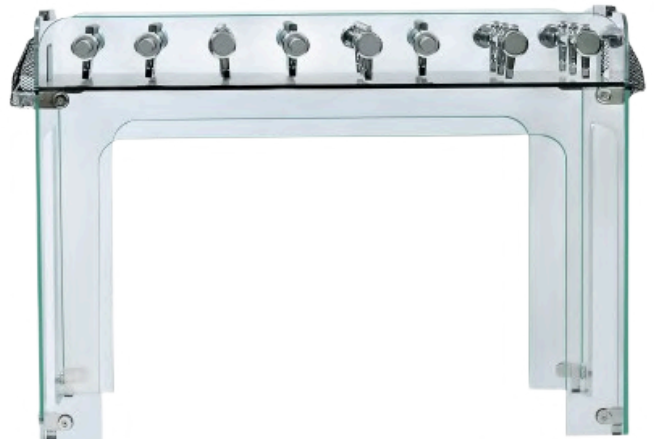


## GLASS

Glass is a unique foosball table model that carries a transparent design approach into a timeless form. The glass effect used throughout its entire structure transforms the product from being merely a gaming unit into an aesthetic element of living spaces. With its minimal lines, simple details, and transparent body structure that enhances the sense of lightness, it harmonizes with modern interiors. GLASS is a premium product developed to be positioned in distinguished environments with high design value.

### Technical Specifications

Title	Details
Overall Dimensions	• 77 x 135 cm
Assembly System	• RTA Installation
Production Time	• 25 - 35 days







## FOOT BILLIARDS

Foot Billiards is an innovative and entertaining activity product that combines the enjoyment of billiards with a large-scale playing field using footballs. It is designed for shopping malls, game and entertainment areas, events, and organizations, and can be safely used by both children and adults.

Its durable body structure and large playing field offer a long-lasting and comfortable playing experience. This special billiards format played with footballs brings together movement, competition, and social interaction.

### Technical Specifications

Title	Details
Overall Dimensions	• 350 x 600 cm
Assembly System	• Professional Installation
Production Time	• 25 - 35 days

