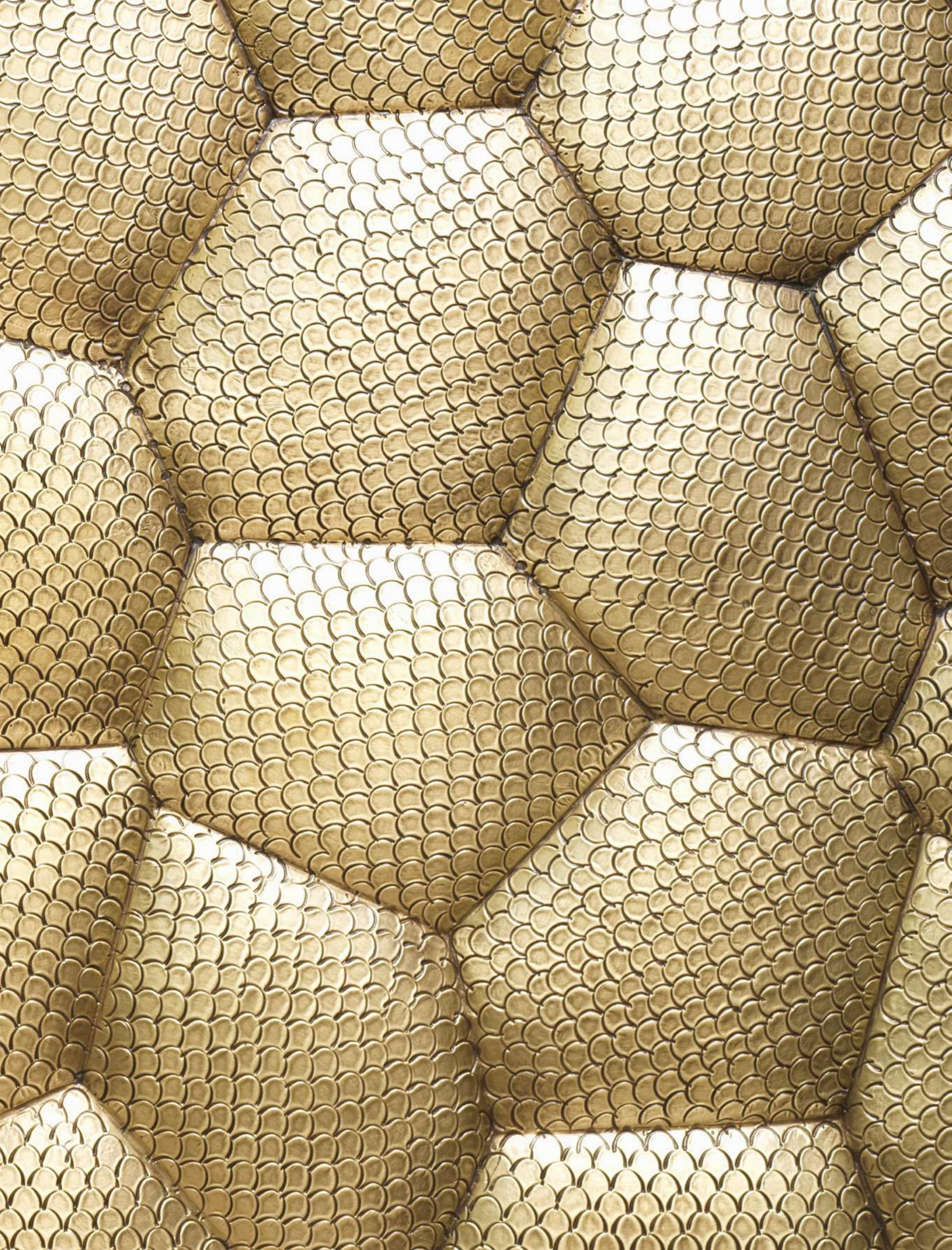




E I C H H O L T Z

EST. 1992



## *EN TOUTE ÉLÉGANCE*

An ode to French elegance, capturing the timeless charm of France — from vibrant cities to serene countryside. Inspired by fashion and art de vivre, each piece reflects effortless grace and enduring sophistication, embodying the essence of timeless, chic French style.



## A NOTE FROM THE EDITOR

Since our founder Theo started Eichholtz more than 33 years ago, he has always held fast to the founding principles of delivering distinctively designed collections with integrity and authenticity. Even today, our designs remain deeply inspired by travels around the world — by places and spaces, cities, antique dealers, and vintage markets. One of our greatest sources of inspiration over the years has been France — its beauty and diversity, from the vibrant cities and serene countryside to the brilliance of the *Côte d'Azur*.

We also draw inspiration from iconic late 20th-century designers such as *Jean-Michel Frank*, *Pierre Jeanneret*, *Charlotte Perriand*, *Andrée Putman*, and - Art Deco master and favorite of Theo - *Jacques Ruhlmann*. Beyond design, we celebrate the richness of French culture: the fashion, the cuisine, and the mastery of fine arts and craftsmanship. This season, we are proud to introduce our latest collection inspired by this magnificent journey.

As we unveil our new collections, we are equally proud of our strong relationships with international partners. We continue to expand with new Eichholtz Brand Stores, with several new locations set to open across the globe in the coming months.

We are also delighted to extend our collaboration with The Metropolitan Museum of Art in New York into its third season. Speaking of partnerships, we are thrilled to announce upcoming collaborations with celebrated New York interior designers *Corey Damen Jenkins* and *Vanessa DeLeon* for 2026.

Our aim has always been to inspire. As you turn the pages of this magazine, we hope you feel the same excitement we do. Behind every piece lies the dedication of our entire design team and the craftsmanship of countless artisans from around the world. We are honored to share this collection with you.

*Edwin van der Gun*

CHIEF CREATIVE OFFICER





*“The only guiding principle in design  
is ‘getting things right’ — the rest is just hot air.”*

— JEAN ROYÈRE



*p.50*

**PHILIPPE VOGELENZANG**

Philippe Vogelenzang captures the soul of France through four exclusive works. Experience the essence of French artistry in every piece.

Les Femmes Collées  
*A striking collage by Philippe Vogelenzang,  
merging fashion, femininity, and modern art.*

**A WORD FROM  
OUR CREATIVE  
DIRECTOR ON THE  
RUBICON SERIES**

The Rubicon series merges precise craftsmanship with advanced technology, creating tables that embody balance, rhythm, and quiet strength.

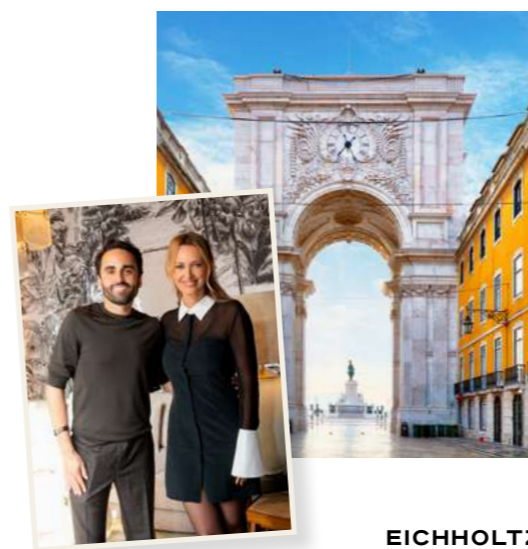
*p.20*



**MEET RYAN SAGHIAN,  
RENOWNED INTERIOR  
DESIGNER FROM LA**

Eichholtz Los Angeles curated by Ryan Saghian redefines luxury retail with bold design and a unique LA spirit. It is more than a showroom; it is an immersive experience.

*p.42*



**EICHHOLTZ  
ARRIVES IN  
LISBON**

*p.72*

Eichholtz by Ponti debuts in Portugal with a new store in Lisbon's vibrant Príncipe Real district. This marks the brand's exciting first step in the country.



**THE  
MET**

**THE COLLABORATION  
COLLECTION WITH  
THE METROPOLITAN  
MUSEUM OF ART**

Discover a whole new range of products inspired by historical artifacts and desired treasure pieces from the past centuries.

*p.24*



*p.40*

**DARING DESIGN  
DRAWS ATTENTION**

The Galiano swivel chair stands out with rich textures and bold design, blending elegance with handcrafted warmth.



# UN INTÉRIEUR SCULPTURAL

## WHEN YOUR HOME BECOMES ART

Sculptural living is the art of elevating everyday spaces into captivating showcases of form and function. At Eichholtz, we believe your home should reflect a refined sense of style — where statement pieces aren't just decorative, but sculptural expressions of individuality. From bold silhouettes to fluid curves and architectural lines, sculptural living invites you to surround yourself with furnishings that inspire and impress, transforming interiors into timeless galleries of modern elegance.



**STYLE THAT SERVES  
A PURPOSE**

The Ramiro side table brings an air of effortless sophistication to any interior. With its sleek brushed steel finish and clean, architectural lines, it evokes the quiet confidence of French modern elegance. Whether positioned beside a sofa or standing alone, its cool metallic sheen plays with the light, adding a sense of calm, contemporary refinement. A refined statement piece for those who embrace *la discrétion du luxe* — the art of quiet luxury.

# THE PERFECT PAIR, À LA FRANÇAISE

## Wilma

SIDE TABLE WILMA N° 119830  
COFFEE TABLE WILMA N° 119829



## Xandria

COFFEE TABLE XANDRIA N° 119543  
SIDE TABLE XANDRIA N° 119544



## Zamora

COFFEE TABLE ZAMORA N° 119373  
SIDE TABLE ZAMORA N° 119374



## Portofino

COFFEE TABLE PORTOFINO S N° 119886  
COFFEE TABLE PORTOFINO L N° 119908



Corey Damen Jenkins

**BIOGRAPHY**

Corey Damen Jenkins is the principal and CEO of Corey Damen Jenkins & Associates, an internationally acclaimed interior design and architecture firm based in New York City. Known for his masterful layering of sophisticated colors, textures, and patterns, Corey's work blends haute couture influences, historic architecture, and global inspiration to create authentic, bespoke spaces. Since founding CDJA in 2008, his designs have been featured in *Architectural Digest*, *ELLE Décor*, *Veranda*, and more, earning spots on the *AD100*, *ELLE Décor A-List*, and *IstDibs 50*.

TROLLEY  
GALLIANO



Clever design and art deco charm, pairing rich oak and brushed brass to serve both style and function with effortless grace

Brown oak veneer with a brushed brass finish



Eichholtz's portfolio of luxury goods offers a refined elegance that draws from the best of the past, and delivers it with a fashion-forward glamour that is a feast for the eyes.



**WORKING WITH EICHHOLTZ**

Eichholtz's dedication to excellence and breaking creative boundaries is truly remarkable. Their worldview defines chic in a way that many brands only dream of, and that classic, timeless sensibility is translated effortlessly through their products.

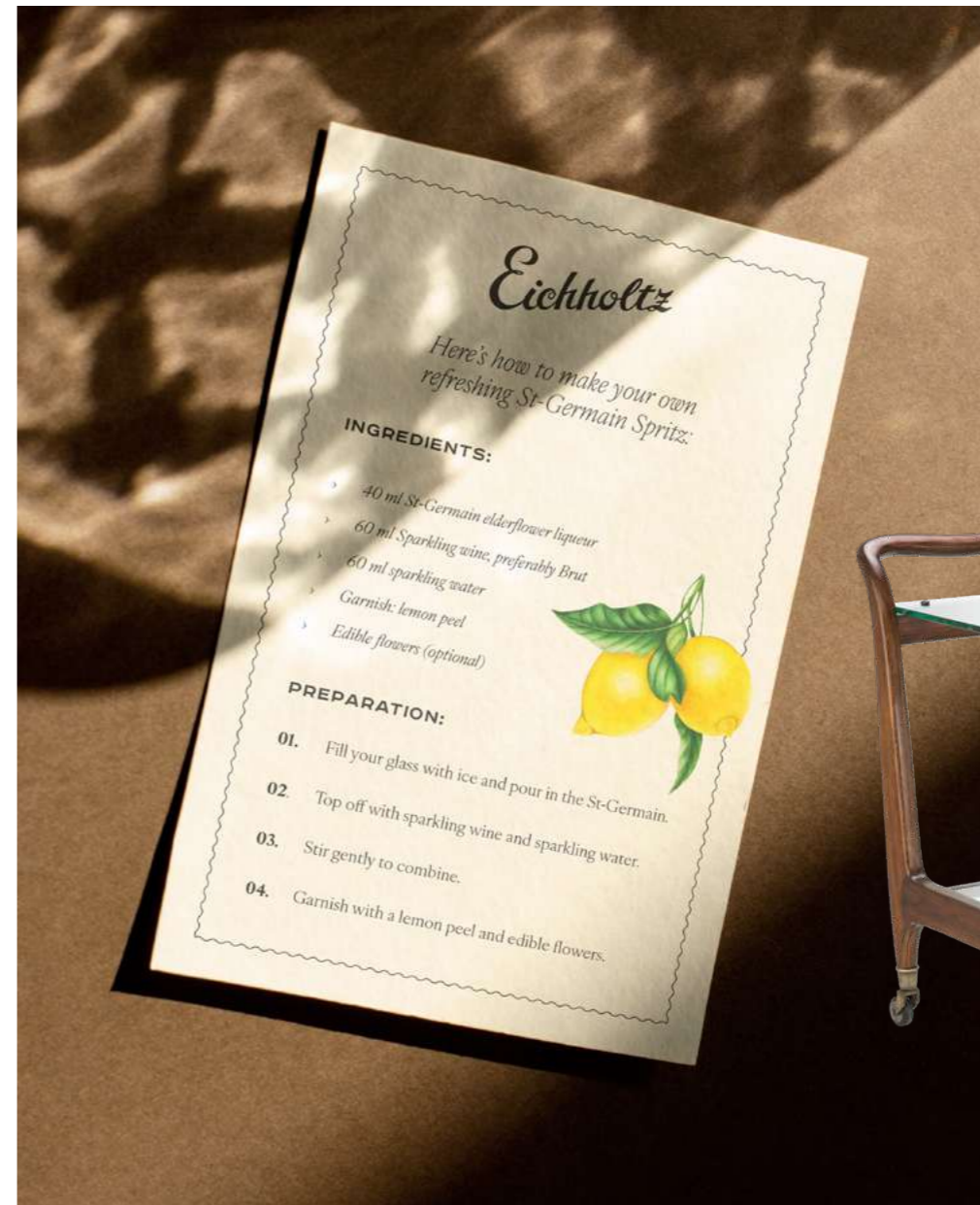


Opéra Garnier, Paris

**MOST INSPIRING PLACE IN FRANCE**

The Opéra Garnier is one of my favorite places to visit. I try to take in a show there at least once a year. Its iconic and sumptuously adorned interiors are the kind of eye candy that inspire and uplift me every time I walk inside. Every detail is exquisitely constructed, both the interiors and the exterior...it's a majestic wonder tucked in the middle of Paris and is a must-see for every visitor.





Trolley Manzo Double and Trolley Julianne  
Both inspired by mid-century modern French  
serving trolleys, featuring a classic rich brown  
wood finish paired with clear glass surfaces.



# SIP ELEGANCE, SAVOR THE BLOOM

When it comes to cocktails that blend history with effortless elegance, few capture the spirit quite like the *St-Germain*. Inspired by the artful traditions of Parisian aperitifs, this floral classic is as enchanting as it is refined. Named after the renowned elderflower liqueur at its heart, the *St-Germain* offers a delicate balance of subtle sweetness, fresh citrus, and sparkling wine — creating a drink that’s light, fragrant, and utterly chic.

Whether you’re hosting an intimate soirée or savoring a moment of personal luxury, this cocktail brings a whisper of Parisian charm to any occasion. Serve it chilled in a flute or coupe glass, garnished simply with a twist of lemon or a sprig of fresh thyme to enhance its fragrant elegance. Add it to your bar cart and let its graceful bubbles and floral notes elevate your evenings. After all, every stylish home deserves a cocktail that embodies sophistication as beautifully as its design.

WALL LAMP FOKWOOD N° 119355 // COFFEE TABLE XANDRIA N° 119543 // CHAIR VOLETTA N° 119543 // SOFA MARVELLA N° 119543 // CHANDELIER BERNARDI N° 118678 // BOWL LAUSANNE N° 119910 // RUG ASHBURTON N° 120051



**MARVELLA & VOLETTA: A SUBTLE SYMPHONY OF TEXTURE AND FORM**

Drawing inspiration from the effortless sophistication and nuanced layering found in classic French styling, this design celebrates subtlety through a neutral colour palette. The careful interplay of textures and patterns adds depth without overpowering while a textured zigzag with an organic flow brings gentle movement and interest. The Ashburton rug sets a rhythmic foundation beneathfoot with its zigzag pattern, complemented by the Xandria glass table featuring an irregular pattern that introduces a modern artistic touch, both grounding and enlivening the space.

The Marvella sofa and Voletta chair embody this refined balance. Upholstered in soft beige faux leather, Marvella's structured silhouette radiates poised grace. The cushions, in a soft ecru fabric, introduce a tactile contrast that feels deliberate, not decorative. Voletta carries this dialogue forward, mirroring Marvella's blend of materials and form, not imitation but a seamless continuation.

Together, these pieces capture the essence of a styling tradition where materials speak in harmony and shapes assert themselves with quiet confidence. The result is an atmosphere thoughtfully composed, welcoming and endlessly nuanced, familiar yet never predictable.



# THE PERFECT GLOW FOR YOUR GRAND SÉJOUR

EACH CHANDELIER BRINGS ITS OWN JE NE SAIS QUOI, OFFERING A UNIQUE GLOW THAT DEFINES THE MOOD OF THE ROOM. ALABASTER SHADES GENTLY DIFFUSE THE LIGHT, CASTING A WARM, INVITING AMBIANCE – PERFECT FOR INTIMATE DINNERS OR ELEGANT LIVING SPACES.



LAURENT N° 119666



TROPIQUE N° 118942



TAVIRA N° 118657



ELYSIAN N° 118794



BILTMORE N° 119958



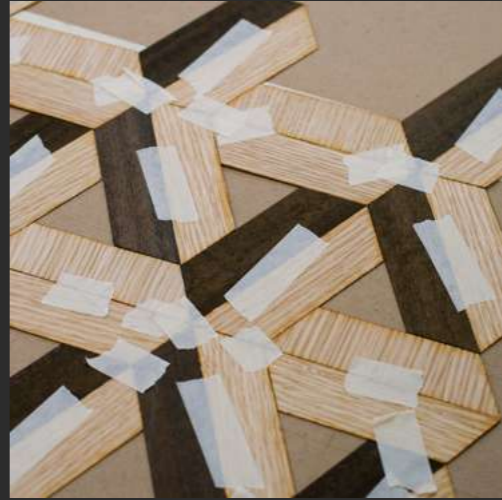
CLARENDON N° 119824



BERNARDI N° 118678



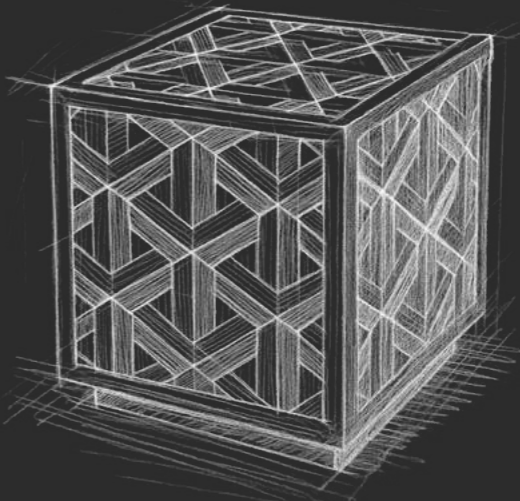
# WHEN RESTRAINT BECOMES EXPRESSION



There's a quiet intention behind every detail of the Rubicon collection. When you first see the inlay patterns, hand-laid in rich wood veneers, you immediately sense that these pieces are designed with care, almost like a ritual.

That feeling is no coincidence. We started with one prototype. Layer by layer, puzzle by puzzle, the inlay came together like choreography. Precision wasn't optional; it defined everything. The name Rubicon reflects that mindset. For me, it's about commitment and clarity.

Once you cross that line, there's no going back. The surfaces are crafted like mosaics, using finely cut veneers applied to custom substrates with exacting control. We rely on technology for precision and consistency, but the warmth and soul? That still comes from the human hand.



*Florian Roozen*

Rubicon bridges craftsmanship and serial production. From the first sketch to the final polish, each table tells a story of rhythm, restraint, and balance. I'm drawn to dualities contrast and calm, repetition and individuality. That tension is what gives these pieces their character. On these pages you'll find the full Rubicon series, honest, elemental, and rich in detail. It's a tribute to the craft of making, and to what happens when design becomes a quiet kind of statement.

*"Rubicon is about finding  
harmony through detail."*

FLORIAN ROOZEN, CREATIVE DIRECTOR



CHAN ZELER BILTMORE N° 119556 // TABLE LAMP MIRABELLA N° 119577 // SOFA AMADEO N° 119567 // CHAIR AMADEO N° 119567 // COFFEE TABLE RUBICON N° 119568



**DINING CHAIR SELENE**

*Renato ecru*  
N° 119927

**DINING TABLE RUBICON**

*Oak veneer*  
N° 119844

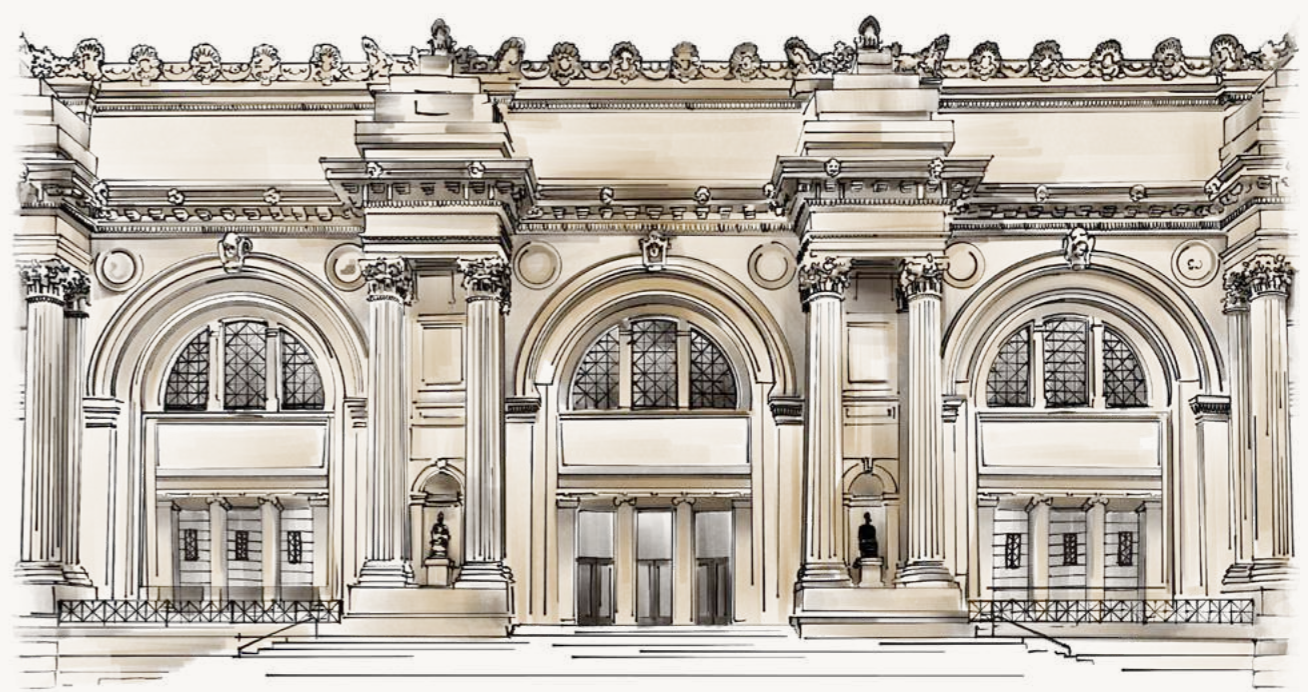
**RUG ANTOINE**

*Ivory / Flat weave / 100% New Zealand wool pile*  
N° 119122



DINING TABLE DAPYRUS N° TM0360 // DINING CHAIR DUVEEN N° TM0369 // WALL OBJECT ACANTHUS SCROLL N° TM0102 // CHANDELIER JENKINS L N° TM0355

# THE MET



EICHHOLTZ

*proudly presents its third collection in collaboration with The Metropolitan Museum of Art*



A WORD FROM

# THE METROPOLITAN MUSEUM OF ART

AS WE CELEBRATE THE LAUNCH OF SEASON 3, WE REFLECT ON THE SIGNIFICANCE OF OUR CONTINUED PARTNERSHIP WITH EICHHOLTZ: ONE ROOTED IN A SHARED DEDICATION TO HONORING ART, CULTURE, AND THE TIMELESS POWER OF STORYTELLING THROUGH DESIGN.

At The Met, our mission is to make art relevant and accessible to the world. This collaboration extends that mission in new and meaningful ways — translating our collection into pieces that bring history into everyday spaces.

With each season, Eichholtz has deepened its engagement with the archive, and Season 3 marks a creative turning point: a move from reproduction to interpretation, where emotion, symbolism, and cultural context shape the design.

We are especially grateful for Eichholtz's thoughtful stewardship of these stories. Their respect for the collection, and commitment to honoring its legacy while reimagining it for a global design audience, has made this partnership both rewarding and enduring.

We look forward to continuing this journey — connecting history, art, and interiors in ways that feel both timeless and newly inspired.

*The Metropolitan Museum of Art  
Licensing & Partnerships*





**The ongoing collaboration between Eichholtz and The Metropolitan Museum of Art enters a new chapter — one that deepens the dialogue between history and contemporary design.**

In this third season, the collection embraces a more expressive and interpretive approach, while continuing to draw inspiration from The Met's vast archive spanning continents, centuries, and cultures. The result is a collection that honors the past while reimagining it for contemporary interiors.

With successful launches in Eichholtz Brandstores around the world - from Melbourne, Riyadh, and Monaco to Los Angeles, Dubai, Miami, New York, and London - the collection has proven both adaptable and resonant for our global network of designers, retailers, and trade clientele.

*By reimagining Museum artworks as modern designs, this collection inspires connections between history and contemporary life.*



**Chandelier Amun**  
Layered geometry transforms carved stone into weightless glass, capturing the essence of Egyptian symbolism in a radiant, modern light.

**Object Walpole**  
This piece is based on a wine cooler made for Sir Robert Walpole, Britain's first prime minister in early 18th-century.



**Composite Papyrus Capital, 380–343 BCE, Egypt, Rogers Fund, 1910.**  
© The Metropolitan Museum of Art

The original capital from the Temple of Amun at Hibis. Papyrus and foxtail plants converge in a symbolic gesture of life, renewal, and divine structure.



**Chandelier Hibis**  
A glowing expression of Egyptian rhythm and verticality — refined glass elements draw from the floral forms carved in stone.

**RHYTHM AND GEOMETRY: CONTEMPORARY WORKS INSPIRED BY EGYPTIAN ART**

A series of pieces in this season's collection are inspired by a composite papyrus capital (380–343 BCE) in The Met's Egyptian Art holdings. Carved with stylized papyrus and foxtail motifs, the Museum's capital, formerly displayed in front of the Temple of Amun at Hibis, embodies the sacred connection between architectural and natural forms in ancient Egyptian art.

We have been inspired to translate that language of rhythm and symbolism into sculptural, contemporary forms — pieces that reflect the column's upward motion and botanical geometry.



**Dining Table, Coffee Table, and Side Table Papyrus**  
A modern silhouette grounded in ancient inspiration, with a sculptural base that mirrors the symmetry of its namesake.

**Table Lamp Ramble**  
The Table Lamp Ramble channels the chrysanthemum-inspired design of an 18th–19th-century Chinese jade dish in The Met collection.



WORKING WITH EICHHOLTZ

I've been working with Eichholtz since 2013. It's more than just a furniture company — it's a dream maker, like Hollywood! Never boring, always delivering that WOW effect with every new collection. The Eichholtz range can transport you to the glamour of 1930s Art Deco or the relaxed luxury of a Balinese resort. There's always a piece that makes me smile and reminds me of something beautiful from the past. Isn't that what design is all about?



MOST INSPIRING PLACE IN FRANCE

France holds a special place in my heart. Last year, we completed a beautiful project in Paris, directly across from the Eiffel Tower — furnished with the Eichholtz collection, including a 500-square-meter rooftop balcony. One of my favorite spots in the city is *Place des Vosges*. The area never fails to inspire me. And for anyone visiting, *Ogata* - a Japanese restaurant that masterfully blends East and West - is a must on the to-do list.



Place des Vosges, Paris

BIOGRAPHY

Jun Meng is an interior architect and founder of JUNMENG Interior, a design studio established in 2008. Originally from Shanghai, he relocated to Europe at the age of 19, settling in a quiet town on the German-Dutch border — a cultural shift that continues to inform his global design perspective.

JUNMENG Interior is known for creating spaces that blend Eastern sensibility with European refinement, offering bespoke interiors for both residential and commercial clients worldwide. Guided by the philosophy "The space to quiet your soul," his work brings calm, clarity, and emotional resonance to each environment. From Shanghai and Hong Kong to Paris, London, Los Angeles, Munich, and Frankfurt, Jun's projects reflect a deep commitment to intentional design, global vision, and quiet luxury.



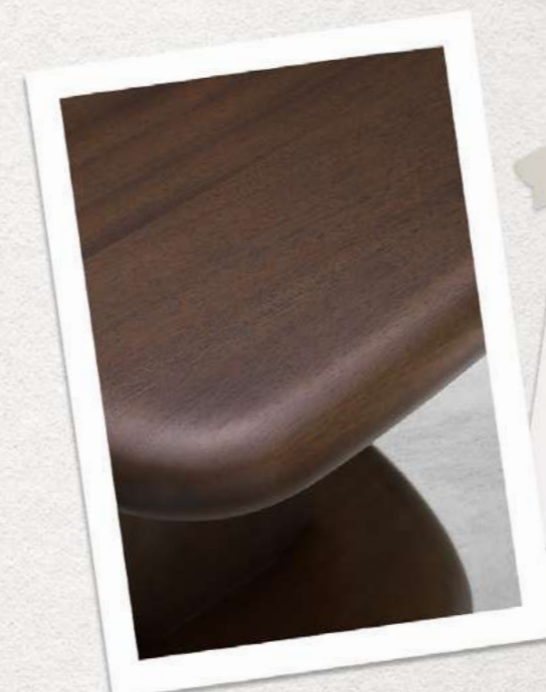
Jun Meng

SIDE TABLE WINDSOR



Solid mahogany wood with a coffee finish

Mahogany wood brings a sense of richness and understated elegance to any room



Every Eichholtz collection feels like a dream, whether it's Art Deco glamour or the serenity of a Balinese resort. There's always that one piece that brings back something beautiful from the past.

© 2025 Eichholtz

Full Winter collection 2025

NE PAS  
DÉRANGER

Prenez un instant  
pour rêver et apaiser  
votre âme!

CHHOLTZ



## RÊVERIE

A word that means daydream in French, *rêverie* captures the essence of a bedroom designed not just for rest, but for quiet escape. Drawing inspiration from the effortless elegance of Parisian apartments and the tailored comfort of boutique hotel suites, this space invites you to unwind in style. Soft neutrals, tactile layers, and graceful forms create an atmosphere of calm sophistication — where luxury feels lived-in, and every detail encourages you to linger a little longer. Here, dreaming isn't reserved for sleep alone.

# UNE BELLE NUIT

This bedroom captures the refined elegance of a Parisian boutique hotel suite, where every detail is meticulously curated. The Dimitrios bed frame, adorned with a signature ribbed wood pattern, embodies subtle luxury and textural depth. This distinctive motif is gracefully mirrored in the Dimitrios nightstands, creating a seamless harmony that elevates the entire space. Available also in a soft beige finish, these pieces offer versatile options to suit both classic and contemporary interiors, inviting you to experience restful sophistication with a distinctly French allure.



BED FRAME DIMITRIOS N° 119507 // NIGHTSTAND DIMITRIOS N° 119213 // CHANDELIER ELYSIAN N° 118794 // TABLE LAMP COSTANZA N° 119989 // WALL LAMP FABIANO N° 119657



*“French refinement  
whispers through  
every detail, weaving  
elegance and grace into  
each timeless piece.”*

- EDWIN VAN DER GUN



BED ASHFORD N° 119870 // TABLE LAMP HALLISTO N° 119878 // NIGHTSTAND CABANA S N° 119898



A BEAUTY, FULL OF BOLDNESS

# UNE BEAUTÉ AUDACIEUSE



## FEARLESS LUXURY: A BEDROOM OF BOLD BEAUTY

A perfect blend of boldness and beauty defines the space, with the Ashford bed frame featuring a hammered metal edge that adds striking elegance to the headboard. The plush Stirling bench in rich Sonoma brown velvet brings warmth and tactile luxury, while the Velutto nightstand, finished in new caramel oak veneer, grounds the room with natural sophistication. Together, these pieces embody “*Une beauté audacieuse*” — a fearless harmony of texture, tone, and refined craftsmanship that transforms the bedroom into a stunning retreat.

BED ASHFORD N° 19870 // BENCH STIRLING N° 119394 // NIGHTSTAND VELUTTO N° 119695 // TABLE LAMP VOLTURNO N° 118772

# L'ALLURE DANS TOUS LES RECOINS

In this serene, neutral-toned living room, bold design elements take center stage, setting the tone with confident elegance. The Galiano swivel chair commands attention with its sophisticated blend of two rich fabrics - Renato brown and Bayard brown - perfectly complemented by a handcrafted wooden swivel base that adds warmth and craftsmanship. Anchoring the space, the Chambord coffee table introduces depth

with its dark brown finish, offering a strong, grounding presence. Delicate glass details in the lighting fixtures and the Luberon dining chairs add a refined contrast; the chairs' classic black frames are beautifully softened by natural seagrass accents and a sleek black leather seat. Together, these carefully curated materials and textures create a harmonious balance between bold statements and understated luxury.





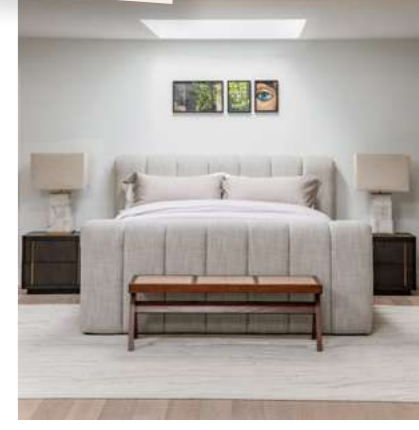
# Store opening LOS ANGELES



Ryan Saghian  
Interior designer and owner  
of Eichholtz Los Angeles



PHOTO BY MICHAEL ALLEN



## MEET THE MAN BEHIND THE CHICEST HOUSE ON THE BLOCK

As one of the most influential interior designers of his generation, *Ryan Saghian* has profoundly reshaped the Los Angeles design scene with a distinctive style that fuses refined elegance with bold experimentation in form and materials.

*“It’s about creating interiors that feel both sophisticated and effortless.”*

- RYAN SAGHIAN

His celebrated work, featured in the industry’s leading publications, expertly balances raw, unexpected textures alongside timeless sophistication — crafting interiors that feel simultaneously elevated and effortlessly inviting. Drawing on his deep appreciation for European craftsmanship and the modern California lifestyle, Ryan brings a visionary approach to Eichholtz’s U.S. expansion, redefining how the brand is experienced on the West Coast.



PHOTOGRAPHY BY ANTHONY BARCELO

Eichholtz Los Angeles, curated by Ryan, is far more than a simple collection — it is a statement of design excellence. Every element has been carefully selected to embody the unique spirit of the LA market while honoring Eichholtz’s rich heritage. This showroom transcends traditional retail; it is an immersive luxury experience that showcases Ryan’s signature aesthetic and demonstrates his rare ability to elevate interiors with bold vision and impeccable execution. Through this partnership, *Eichholtz Los Angeles* sets a new standard for luxury retail, boldly shaping the future of design.



# MODERN

# CANVAS



WALL OBJECT MAXIMUS N° 118642

**Introducing wall panels that masterfully blend art, materiality, and structure into a bold decorative statement, inspired by timeless French elegance.**

Signature pieces like Ultimo, Maximus, and Aureus are meticulously crafted, often featuring rich finishes such as vintage brass that lend warmth and enduring character. The layered, three-dimensional design plays with light and shadow, creating a dynamic visual rhythm that intensifies beautifully when multiple panels are displayed together.

These wall objects transcend simple decoration; they bring architectural interest and sculptural presence to any space. Whether placed against clean, minimalist walls or contrasted with softer textures, they introduce a refined tension that elevates the room. Select a standout piece or compose a rhythmic arrangement — either way, these panels offer a unique artistic layer and sophisticated edge to your interior.







Raoul Sanchez

### BIOGRAPHY

Raoul Sanchez is a Zurich-based interior designer and curator with roots in applied arts, fashion, and gallery work. Since founding Visite Privée in 2020, he's become known for interiors that mix vintage pieces with contemporary design and fine art. His approach is thoughtful and personal, with a quiet sense of poetry. Earlier, he shaped creative concepts at *Jelmoli*, *Bongénie Grieder* and *Galerie Andres Thalmann*. Recent projects include private residences and the Eichholtz by Visite Privée showroom in Zurich.



Natural oak veneer

DESK  
COLSTON

Clean lines, rich tones, and with its bulky form, this piece strikes between modern elegance and natural warmth



What makes Eichholtz stand out is the creative freedom it allows, enabling bold ideas while staying true to a distinct identity.

### WORKING WITH EICHHOLTZ

Since 2020, the collaboration with Eichholtz has been shaped by a shared commitment to timeless elegance and a strong, recognizable design language. It's a partnership built on mutual trust, inspiring interiors that are both visually striking and emotionally grounded. The brand's consistency in quality, vision, and evolving collections aligns seamlessly with the curatorial approach at Visite Privée.



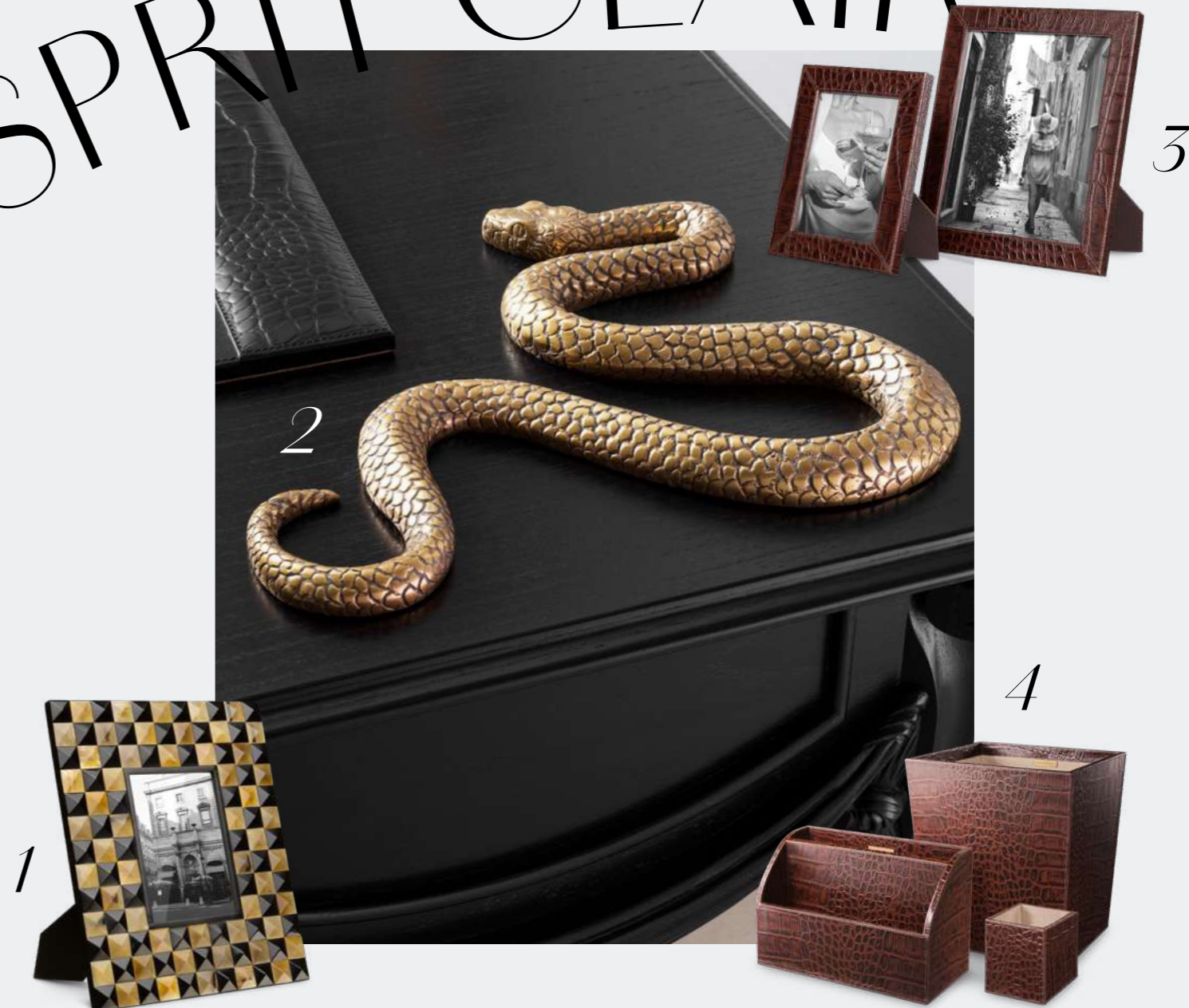
Marché Paul Bert Serpette

### MOST INSPIRING PLACE IN FRANCE

Marché Paul Bert Serpette just outside Paris is one of my favorite spots. The atmosphere is full of charm — endless vintage furniture, objects and art just waiting to be discovered. I love browsing the stands and always end up finding something unique. It's a treasure hunt that never gets old, and the perfect place to source special pieces that truly reflect what my clients are looking for.

DESIGNER'S CHOICE

# UN BUREAU SOIGNÉ, UN ESPRIT CLAIR



1

2

3

4

5

**1. PICTURE FRAME MAGICIAN**

*Multicolored horn*  
N° 119523

**2. OBJECT SERPENT**

*Vintage brass finish*  
N° 119624

**3. PICTURE FRAME SCALEO**

*Croco embossed antique brown leather*  
N° 119980

**4. DESK SET SCALEO**

*Croco embossed antique brown leather*  
N° 119979

**5. DESK BLOTTER SCALEO**

*Croco embossed antique brown leather*  
N° 119981

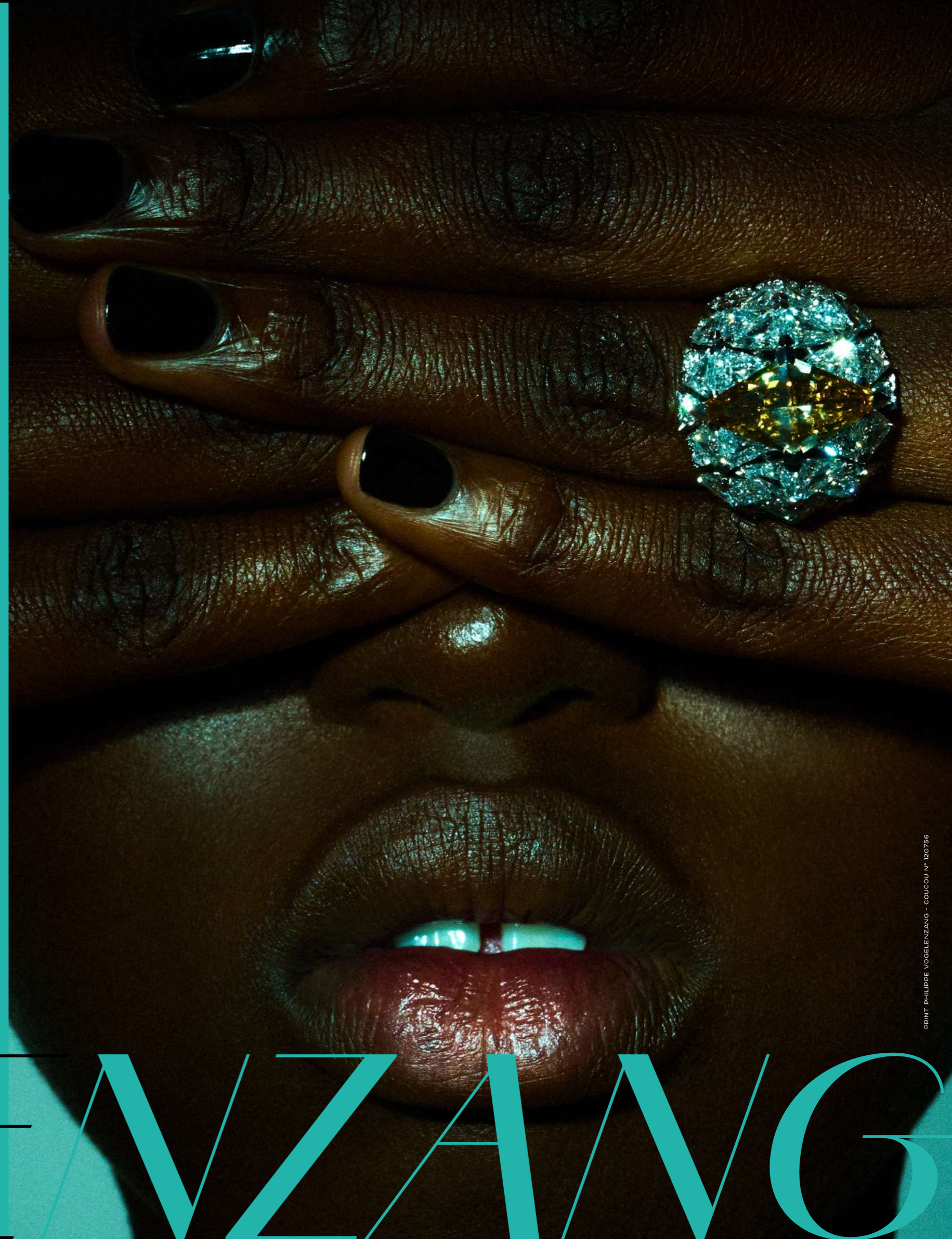


TABLE LAMP KALLISTO N° 119978 // WALL LAMP HESTIA N° 119269 // WALL CABINET BELCANTO N° 119123 // DESK ZAFFIRO N° 119164 // DINING CHAIR COSTA WITH SHELF N° 119604 // PLANTER HORTA N° 119596

# PHILIPPE

"COUCOU REFLECTS TIMELESS PARISIAN ELEGANCE - A NOD TO THE ICONIC FRENCH JEWELRY HOUSE FOR WHICH IT WAS ORIGINALLY CREATED, AND TO THE REFINED SOPHISTICATION EMBODIED BY THEIR PIECES."

# VOGUE ELLENZANG



# CAPTURING THE SOUL OF FRANCE



PRINT PHILIPPE VOGELENZANG - BEURRE SALÉ N° 120755

“Beurre Salé”

BY PHILIPPE VOGELENZANG



Philippe Vogelenzang  
Photographer

France has long inspired me with its unique blend of style, design, and cultural heritage, and these four exclusive works are my tribute to that rich legacy. Each piece explores a different aspect of French life, weaving together history, playfulness, and modernity through photography and mixed media.

*Coucou* reflects timeless Parisian elegance — a nod to the iconic French jewelry house for which it was originally created, and to the refined sophistication embodied by their pieces. Another work, *Beurre Salé*, takes a more ironic, playful approach. Its simple yet sensual black-and-white composition celebrates the everyday pleasures of French living with a wink, perfectly complementing the spirit of this collection.

Breaking new ground, *Les Femmes Collées* — *Lola Douce* and *Coco Jolie* represent my first exploration beyond traditional photography, using collage techniques to create bold, contemporary female portraits. These pieces channel the vibrant energy of modern pop art while paying homage to the visual language of French couture and culture.

Together, these four works bridge heritage and innovation, refinement and irreverence — offering a fresh perspective on French culture through my lens. They invite viewers to experience a layered story, where elegance and playfulness coexist in perfect harmony.



PRINT PHILIPPE VOGELENZANG - COCO JOLIE N° 120758



**PRINT WINDOW TRELLIS**  
by Michael Willett set of 2  
N° 120719



**DINING TABLE GENOVA**  
Travertine / brushed brass finish  
N° 119053



**CHANDELIER SOLANGE**  
Antique brass finish / handmade glass  
N° 118950



**BAR CABINET WEXFORD**  
Natural oak veneer / eucalyptus veneer  
N° 119547



**BOWL ARONA**  
Vintage brass finish  
N° 119081



DINING CHAIR LUBERON N° 119529 // DINING TABLE GENOVA N° 119053 // BOWL ARONA N° 119081 // WALL LAMP CELESTIA N° 180721



# ZEN POISE, PARISIAN CHIC



**A STRIKING FUSION WHERE THE TIMELESS ELEGANCE OF FRENCH CLASS MEETS THE UNDERSTATED BEAUTY OF JAPANESE FOUND TREASURES, ALL ANCHORED BY A VIBRANT, GLOSSY RED BASE.**

Inspired by the quiet elegance of traditional Japanese fire bowls, the Barocco table lamp brings a sense of calm, warmth, and sculptural beauty to any space. Its form echoes the hibachi, a vessel once used to hold glowing charcoal, reimagined here as a minimal, open design that casts a soft and ambient light.

Barocco is available in a deep red finish that evokes the glow of embers, and a refined off-white for a more subtle and timeless expression. Both versions offer a warm, grounded presence

that complements modern and classic interiors alike. Subtle design details nod to handcrafted elements, giving Barocco a distinct personality that feels both timeless and contemporary. It's not just a light source, but an invitation to pause, reflect, and enjoy a moment of stillness.

Whether placed on a side table, shelf, or bedside, Barocco is designed to create atmosphere — offering more than illumination, it brings a quiet glow that feels personal and enduring.



Elisabeth Poppe

**BIOGRAPHY**

Elisabeth Poppe is an Oslo-based interior architect and creative director with a background in luxury residential design and architectural styling. Since founding Poppe Design AS in 2007, she's become known for interiors that blend Scandinavian structure with rich textures, layered compositions, and bold personality. Her design ethos — "More is more. Less is bore." — challenges Nordic minimalism with cinematic warmth and curated intensity.

Recent projects include private homes, fjordside cabins, and boutique commercial spaces. Recognized for both creative excellence and business growth, Poppe Design delivers fully bespoke, turnkey environments that balance sophistication with soul.

CHAIR  
MARBELLA

Its swivel function adds versatility, making it a stylish and comfortable seating option with lasting appeal



A smooth fabric finish and a sleek black base



Whether it's a sculptural light fixture, a plush velvet armchair, or a dramatic mirror, Eichholtz always delivers standout items that seamlessly align with the Poppe Design aesthetic.

Eichholtz

Drilling 52, 2311 VN Noordwijklaan

Full / Winter collection 2023

**WORKING WITH EICHHOLTZ**

Working with Eichholtz is like being given a beautifully curated toolbox for storytelling. The brand's collections offer a rare combination of bold elegance, European glamour, and timeless design — making it effortless to create interiors that feel both luxurious and lived-in. I particularly appreciate how Eichholtz pieces elevate a space without overpowering it.



**MOST INSPIRING PLACE IN FRANCE**

Whenever I visit France, *Hotel Costes* in Paris is my sanctuary and my source of endless inspiration. It's where every detail speaks to my heart as a designer. From the rich, iconic interiors by *Jacques Garcia* to the elegant new wing designed by *Christian Liaigre*, the hotel strikes a perfect balance between heritage and modernity.

But it's not just the interiors that inspire me. The scent that lingers in every hallway, the attitude and style of the impeccably dressed staff, and the art of people-watching in the buzzing restaurant all contribute to a unique sensory experience. It's a masterclass in atmosphere — and a place where I always return with new ideas, textures, and moods to bring into my own projects.



Hotel Costes, Paris



# À VOUS DE CHOISIR



*“For a house to be successful,  
the objects in it must communicate with one another,  
respond and balance one another.”*

– ANDRÉE PUTMAN



**TABLE LAMP  
MIRABELLA**

Elegant at first glance, intricate upon closer inspection. Mirabella’s faceted glass elements — each hand-shaped and delicately folded like petals — catch the light with a soft, rippled texture that echoes the movement of water. Framed in vintage brass, this piece brings a sense of quiet luxury to any room. The effect: a lamp that glows, even when it’s off.

**TABLE LAMP  
FENWICK**

Fenwick takes inspiration from the intricate textures of coral, translating nature’s sculptural complexity into vintage brass. Its flowing ridges catch the light in unexpected ways, giving the piece both movement and depth. A solid black granite base adds contrast and weight, grounding the design with a quiet, architectural presence. More than just a functional object, Fenwick feels like a found fragment from the natural world, reimagined through the lens of refined craftsmanship.

**TABLE LAMP  
NURIA**

Nuria is a study in soft yet bold contrasts — the cool weight of granite, the warm sheen of brass, the glow of handmade glass. Inspired by a wall lamp from a previous collection, its softly flowing, tactile centerpiece brings a familiar shape into a new context. The oval shade echoes its curves, resulting in a cohesive, sculptural silhouette.

**TABLE LAMP  
KAMARI**

A true sculptural tribute to the passage of time. The base, cast in vintage brass, is textured with detailed fossil imprints inspired by stones found in Southern France, where ammonites and ancient shells lie embedded in sun-warmed limestone. We took one such surface and translated it into metal, preserving its layered, organic richness. The result really feels like something unearthed, a relic made into a modern piece.

Topped with a generous square shade in natural linen, Kamari strikes a balance between raw texture and refined form. It’s a piece that doesn’t just light a room, but transforms it — quietly bold, undeniably tactile.

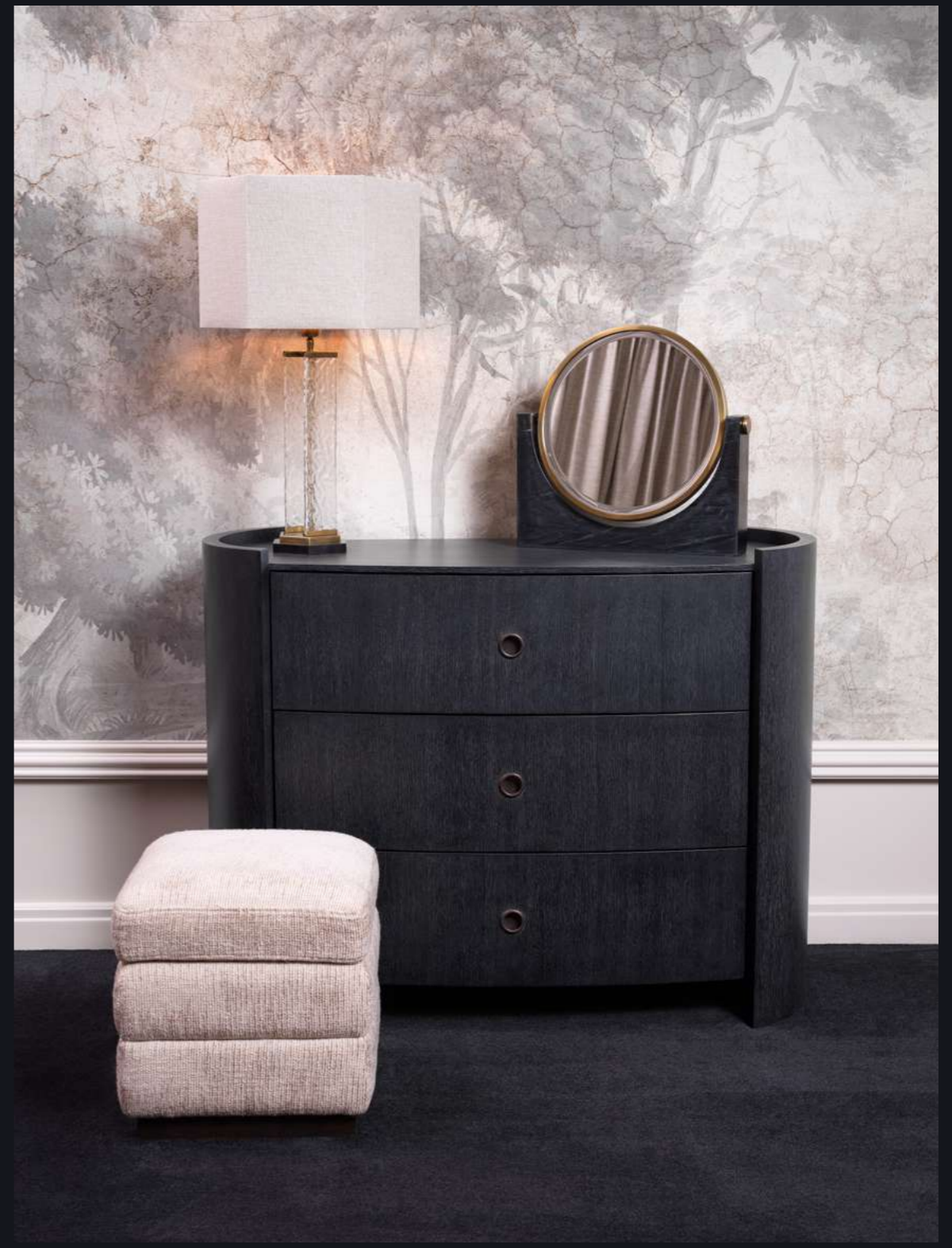
**TABLE LAMP  
KALLISTO**

At first glance, Kallisto looks playful — a stack of smooth river stones. But look again, and it reveals itself as quietly meditative. Inspired by cairns and Zen gardens, the base evokes a sense of rhythm and flow: repetition without any symmetry, movement without excess. Whether styled in a serene bedroom or minimalist living space, Kallisto brings a calming presence and sculptural edge.

## TRÉSORS

A word that means treasures in French, *trésors* evokes more than just objects of value. It speaks to the meaningful details that elevate a space. In dressing rooms and the quietly luxurious corners of a home, our accessories bring this spirit to life. Crafted from materials like white marble, agate stone, faux amethyst, and faux amber, each piece is a refined discovery — bold enough to draw the eye, yet subtle enough to belong. These decorative accents do more than complete a room. They enrich it, offering small moments of wonder where elegance meets intention. Because sometimes the true treasure lies in the detail.





**TABLE LAMP HARMONIS**

*Vintage brass finish / handmade glass / black granite base*  
N° 119787

**TABLE MIRROR VIVALDI**

*Black marble / vintage brass finish*  
N° 118530

**DRAWER DRESSER SPLENDORA**

*Charcoal grey oak veneer / bronze finish*  
N° 119329

**STOOL VALMONT**

*Creststone beige / black base*  
N° 119222



**BOWL MERONA**  
*Vintage brass finish*  
N° 119071



**BOX LUCIDA L**  
*Black finish / faux amber*  
N° 119595



**TRAY SONORA**  
*Agate stone*  
N° 119661



**TRAY SONORA**  
*Agate stone*  
N° 119662

**BOX LUCIDA S**  
*Black finish / faux amethyst*  
N° 119596



**OBJECT SERPENT**  
*Vintage brass finish*  
N° 119624

*TREASURES THAT  
ELEVATE EVERY SURFACE*



### WORKING WITH EICHHOLTZ

I see Eichholtz as a foundation. It's a starting point that allows me to make combinations with other materials, lampshades, and fabrics, to add my own touch to the brand. Eichholtz is a remarkable brand with exceptional service. Their creativity is both tasteful and commercially intelligent.



Le Voltaire

### MOST INSPIRING PLACE IN FRANCE

Paris is my second home. I love the *Antoine Bourdelle Museum*, a sculptor's light-filled atelier beside his classical residence, which inspired my own home's architecture. My go-to restaurant is *Le Voltaire* on the *Quai Voltaire*, one of Paris's oldest, where old-world effortlessly meets the energy of today's bloggers and influencers. Service is led by Thierry, who has become something of an icon himself.

### BIOGRAPHY

Geoffroy van Hulle is a Belgian interior decorator whose maximalist style blends baroque and classical influences with a contemporary edge. A sixth-generation designer from a family of furniture makers in Maldegem, his rich, theatrical interiors span private and commercial projects across Europe and the United States. Known for layered textures, vibrant patterns, and luxurious details, his work is featured in the book *Grand Interiors* and balances opulence with comfort.



Geoffroy van Hulle

Layered leaves and soft shades bring a natural warmth and quiet sophistication to any space



CHANDELIER CHEVERNY

Bronze finish with soft white shades

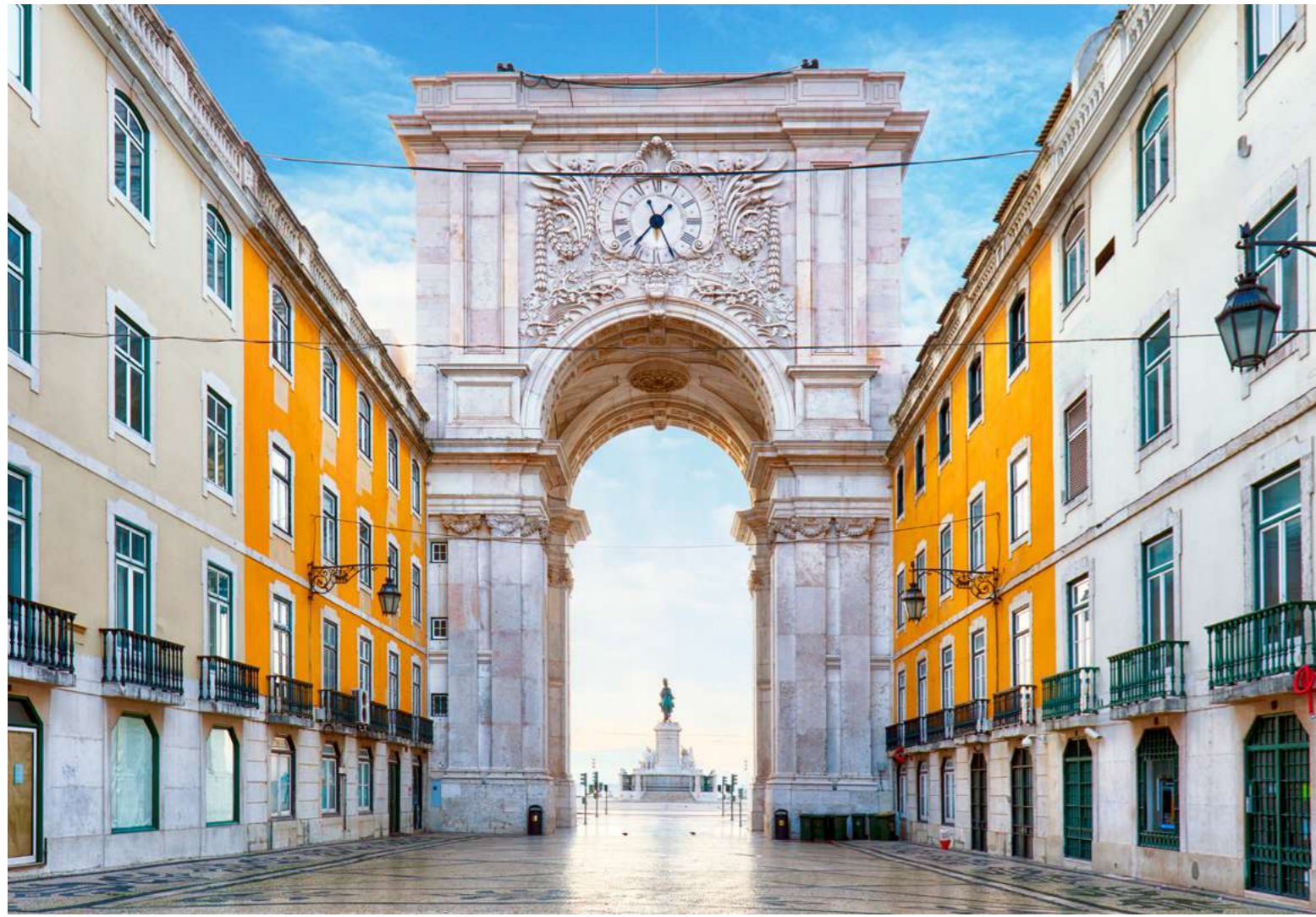


Eichholtz offers the structure, I bring the soul. Their pieces are a foundation for personal expression, much like Paris itself: timeless, elegant, and always inspiring. It's where design becomes deeply personal.



Eichholtz  
Delftweg 52, 2211 VN Noordwijkerhout

Full Member collection 2025



# STORE OPENING LISBOA, PORTUGAL

EICHHOLTZ BY PONTI HAS OFFICIALLY OPENED ITS DOORS IN THE HEART OF LISBON'S VIBRANT PRÍNCIPE REAL DISTRICT. LOCATED ON RUA DE SÃO MARÇAL, THIS EXCLUSIVE DESTINATION MARKS THE BRAND'S FIRST PRESENCE IN PORTUGAL.

It presents a curated showcase of Eichholtz furniture, lighting, and accessories within an environment that reflects the essence of refined European living. More than just a retail space, it is a design destination where timeless elegance meets contemporary style, offering inspiration to design professionals, interiors enthusiasts, and discerning consumers.

Come and visit our store at:  
Rua de São Marçal 174  
1200-043 Lisboa



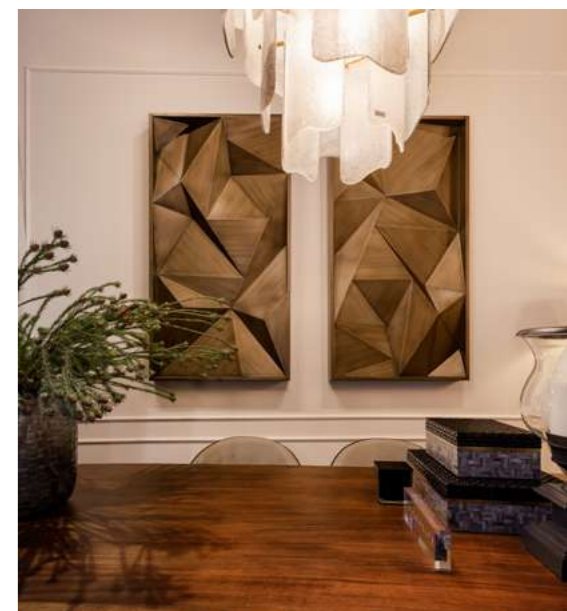
Inside, the atmosphere is warm and sophisticated. Sculptural forms, rich textures, and carefully considered details reflect Eichholtz's dedication to craftsmanship and style. Whether for high-end residences, boutique hotels, stylish commercial spaces, or private homes, *Eichholtz by Ponti* offers versatile solutions that elevate any interior. It is a place where creativity and comfort come together, inviting every visitor to experience the art of living beautifully in the heart of Lisbon.

*"I wanted to create more than just a store: a space that truly reflects the beauty of curated design and the soul of Lisbon."*

- GUSTAVO PONTES



Gustavo Pontes & Debra Montenegro  
Owner of Eichholtz by Ponti, Gustavo Pontes poses with well-known influencer and model Debra Montenegro during the official store opening party.



# TAKE A SEAT

Designed to suit both modern interiors and the timeless elegance of *Hausmann-style* apartments, our sofa designs blend comfort, craftsmanship, and refined form. From the modular Dunemore in barley leather to the sculptural Amore in Avelin brown, each piece brings its own quiet statement. The Zevron in Alvyn cream offers tailored ease, while the Bastion in seashell off-white adds a soft, calming presence. Elevated yet inviting, these sofas offer lasting comfort with effortless style.

1



2



3



4

**1. MODULAR SOFA  
DUNEMORE**

*Barley leather*  
N° 119498

**2. SOFA AMORE**

*Avelin brown / black base*  
N° 119809

**3. SOFA ZEVRON**

*Alvyn cream / black feet*  
N° 120126

**4. SOFA BASTION**

*Seasheel off-white / charcoal veneer base*  
N° 118683

**5. SOFA MARVELLA**

*Valente beige faux leather / renato ecru*  
N° 119364

5



# WHEN TEXTURE AND DESIGN TAKE CENTER STAGE

Bravon, Oscuro, Caldera, and Thoren side tables turn function into art. With hammered textures and sculptural forms, each piece adds depth, movement, and character to a space. Whether it's Bravon's bold geometry, Thoren's organic curves, or Caldera's architectural edge, these designs bring a curated, tactile presence — proving that texture and design truly take center stage.



SIDE TABLE THOREN  
N° 119921



SIDE TABLE CALDERA  
N° 119917



SIDE TABLE OSCURO  
N° 119467



SIDE TABLE BRAVON  
N° 119926



**CHANDELIER GUSTAVE**

*Smoke glass / bronze finish*

N° 119342

**PRINT INK CASTING**

*Black wooden frame / clear glass*

N° 120720

**TABLE LAMP ARABELLA**

*Piano black finish / black granite base*

N° 119451

**FLOOR LAMP ARABELLA**

*Piano black finish / black granite base*

N° 119975

**SOFA BASTION**

*Seashell off-white / charcoal veneer base*

N° 118683

**CHAIR BASTION**

*Seashell off-white / charcoal veneer base*

N° 118980

**CHAIR VALORE**

*Renato brown*

N° 119367

**COFFEE TABLE BRAVON**

*Ebony oak veneer*

N° 119925



# DÉTENTE

*Détente* — a word that embodies the art of relaxation, perfectly suited to an elegant outdoor setting inspired by the sun-soaked elegance of Provence. It celebrates moments of effortless calm, where beautifully crafted furniture meets the gentle warmth of Mediterranean light. Think soft linens, natural textures, timeless silhouettes arranged to invite lingering conversations and quiet reflection. Drawing on the rustic charm of Provençal landscapes and the refined sophistication of French country living, each piece creates a sanctuary outdoors — where comfort is paramount, and every detail whispers serenity. Here, détente is not just a pause; it's a refined lifestyle.



OUTDOOR CHAIR BELAX N° 20139 // OUTDOOR COFFEE TABLE ROUND N° 20012 // OUTDOOR SOFA CAP-ANTIBES N° 19377 // POUF RELAX N° 19475 // OUTDOOR BED LAGUON N° 19805



VIVRE  
AU SOIR



*“The exterior is as important as the interior.”*

– JEAN PROUVÉ





OUTDOOR CHAIR ARUBA N° 120404 // OUTDOOR COFFEE TABLE WESTON N° 120180 // OUTDOOR SOFA ARUBA N° 120407 // OUTDOOR CUSHION FLORENT RECTANGULAR N° 119641 // BOWL YERBA N° 118078

# *UNE TERRASSE TOUT EN STYLE*

Design meets open air in a setting where every piece is thoughtfully curated to elevate outdoor living with a Provençal sense of style. The Aruba outdoor sofa and chair stand out with soft, organic lines and a refined presence. Crafted from natural teak, they bring warmth, texture, and timeless elegance to any garden or terrace. More than a place to lounge, their flowing silhouettes transform a sunlit corner into a serene and sophisticated retreat where indoor comfort meets outdoor freedom.



The current trend in design shows that the comfort and functionality of indoor furniture are increasingly making their way outside. Pieces once designed solely for indoor use are now crafted with materials and techniques suited for outdoor environments, without sacrificing style or comfort. This creates

outdoor spaces where the same luxury and coziness of indoor living can be enjoyed, featuring durable, comfortable seating and practical tables that perfectly complement natural surroundings. This development reflects a growing desire to seamlessly connect indoor and outdoor living.

#### NATURAL TEXTURES

Textured stone, rattan, and ceramic materials are favored for their warmth and authenticity. Teak, with its rich grain and natural durability, adds timeless beauty and resilience to outdoor furniture, creating inviting spaces that blend seamlessly with nature.



#### MINIMALISTIC DESIGN

Clean lines and sleek designs create a modern, uncluttered look focused on simplicity and function. The Outdoor Coffee Table Volterra, with its round shape and sand-finish cream ceramic top, perfectly captures this minimalist elegance for outdoor spaces.



#### WOVEN TEXTURES

The aged teak Manzo chair with light grey rope weave brings natural texture and modern elegance to outdoor spaces.



#### MODULAR AND MULTIFUNCTIONAL FURNITURE

The Hampton modular chair and daybed in faux rattan offer flexible seating that can be rearranged to suit any occasion, while the Nomade sofa, crafted from natural teak, effortlessly transforms from a cozy seat into a spacious lounger. These versatile pieces maximize space and adapt to your lifestyle, blending comfort with functionality.



**EXTÉRIEURES  
TRENDS**



CHAIR ALDEN N° 119399 // SOFA LOUNGE CLUB L N° 120107 // CHAIR ARCADIA N° 119621 // SIDE TABLE KANADIA N° 119841 // CHANDELIER TROPICQUE N° 119942 // PRINT DÉFEND CATENA BY MICHAEL WILLET SET OF 2 N° 120723

**THE IDEAL FRENCH LIVING ROOM: LAID-BACK, ARTISTIC, AND EFFORTLESSLY CHIC**

This living room embodies relaxed sophistication with the Chair Alden and the Sofa Lounge Club, their generous proportions inviting quiet comfort. Four Villeroy travertine coffee tables and a natural jute rug add texture and warmth, creating an effortlessly chic space that feels personally curated. This is the ideal country-inspired living retreat, where timeless style and cozy ease come together seamlessly.



**Colindale**

PENDANT N° 118981



WALL LAMP LEXINGTON DOUBLE N° 120001



**Leiza**

DINING CHAIR N° 119506

**FOR THOSE WHO KNOW**



**Cairo**

HURRICANE S N° 119801  
HURRICANE L N° 119802

TABLE LAMP DATCHA N° 119454

**COMPLETE THE LOOK**

Vintage brass accents add timeless warmth and subtle sophistication to the space. Paired with generous seating and natural textures, the room feels effortlessly elegant — carefully curated for a refined living sanctuary where comfort and style unite naturally.



**Xandria**

CONSOLE TABLE N° 119545

# EXTENSIBLE



EXTENSIBLE DINING TABLE ATELIER L N° 119600 // DINING CHAIR MADRUS N° 119916 // PRINT TRELIS PATTERN BY ETHAN HARPER II SET OF 2 N° 120744 // CHANDELIER LAURENT RECTANGULAR N° 119666 // WALL LAMP LAURENT N° 119665



## ROOM TO GATHER, STYLE TO SPARE

Designed with both everyday living and special occasions in mind, the extendable dining table Atelier L transforms effortlessly from an elegant 280 cm centerpiece to a generous 350 cm setting. Perfect for hosting larger dinners, available in washed oak veneer and charcoal grey veneer, it offers added space without ever compromising on style. The extension is thoughtfully integrated, maintaining the table's clean lines and understated elegance without disrupting its aesthetic.







1



3



2



4



5

**1. CHAIR GRIMAUD**

*Renato honey  
N° 119302*

**2. CHAIR BASTION**

*Seasheel off-white / charcoal veneer base  
N° 118980*

**3. CHAIR ZEPHIRA**

*Charcoal grey oak veneer / durini natural  
N° 119168*

**4. CHAIR OMBRIA**

*Mocha mahogany wood / beckett beige  
N° 119848*

**5. DINING CHAIR PERCY**

*Light brown mappa burl veneer / loki natural  
N° 119622*

TIME TO UNWIND



**EICHHOLTZ B.V.**

Delfweg 52, 2211 VN  
Noordwijkerhout  
The Netherlands

Eichholtz.com  
Phone: +31 252 515 850  
Email: info@eichholtz.com

**COPYRIGHT**

© 2025 / 2026 Eichholtz B.V.  
All rights reserved. No part of this publication  
may be reproduced, stored in a retrieval  
system, or transmitted in any form or by any  
means, electronic, mechanical, photocopying,  
recording or otherwise, without prior written  
consent of Eichholtz B.V.



**FOLLOW US  
ON INSTAGRAM**

**EICHHOLTZ USA**

275 North Elm Street, Suite 240,  
High Point, NC 27262,  
The United States of America

Eichholtz.com/usa  
Phone: +1 336 886 1142  
Email: info@eichholtzusa.com

**DISCLAIMER**

Please note that certain pieces featured in this  
magazine may be discontinued or unavailable in  
your region. Product specifications - including  
prices, colors, and materials - are subject to  
change. For the latest information on our  
collection, we invite you to visit our website or  
connect with one of our sales representatives.



**THIS MAGAZINE IS CO<sub>2</sub>  
OFFSET THROUGH CERTIFIED  
CLIMATE PROJECTS.**

