



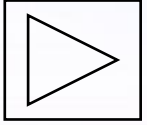
Pedalicor

ART IN TECHNOLOGY
combination of ancient manufacture with latest technology

Loudspeakers

Made in Florence





Play the
production video

"I've never seen a sound that looked like that"

Terry Pratchett



Dedalica Heritage

The desire of discovering the ancient artisan generation and the passion in the field of acoustics have given birth to a new project of **innovation within tradition.**

The Dedalica audio systems comes from our desire to continue this ancient **artisan tradition.**

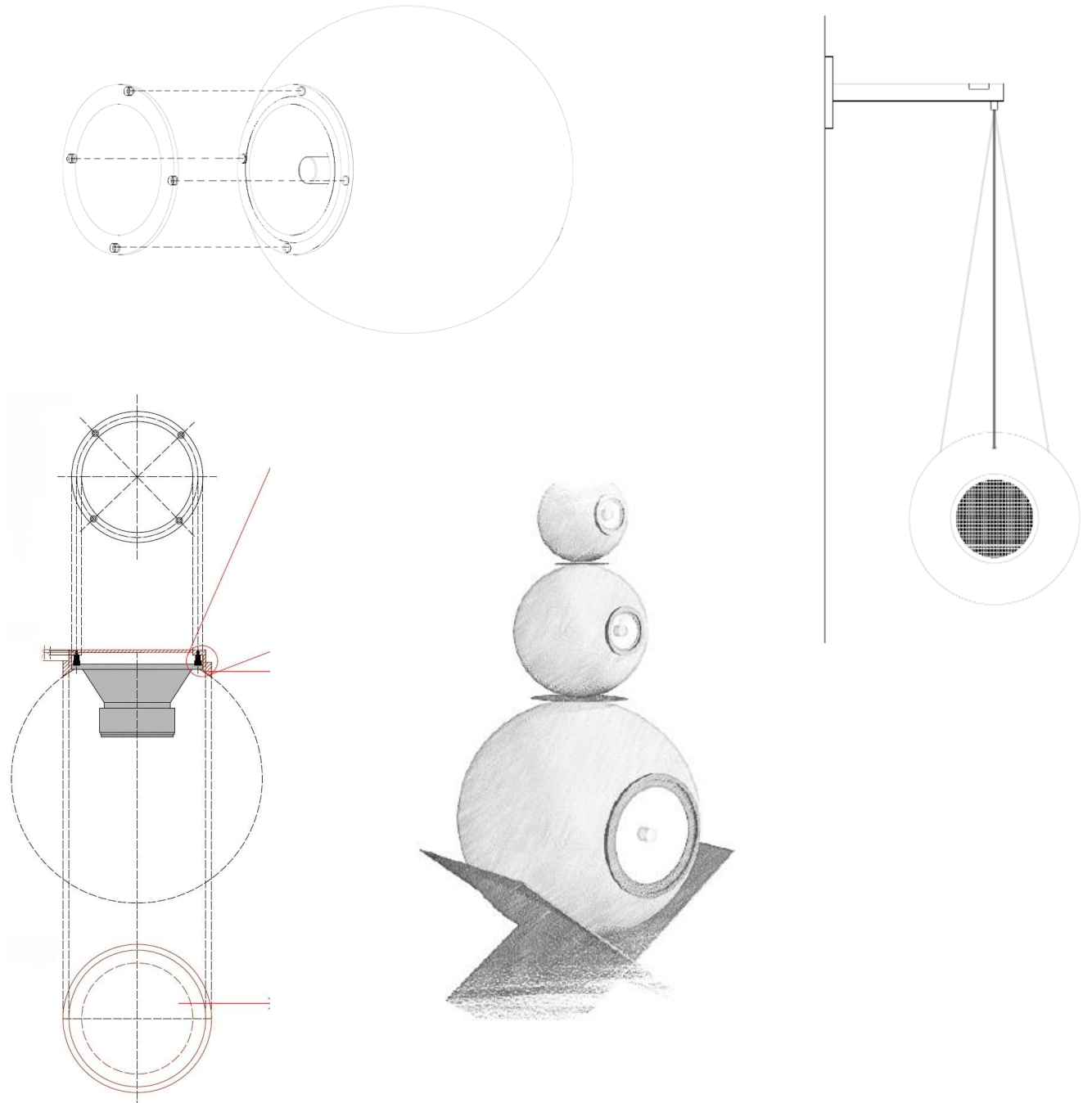
By discovering Terracotta's acoustic capacity we can offer everyone the possibility to have a piece of history and **Tuscan** uniqueness.





Why the spherical shape?

In nature, the sound of waves propagates spherically, so a spherical speaker enclosure guarantees the **highest quality of sound** thanks to the absence of edges that allows to cancel the internal refractions and to absorb concentric sound waves.



“ We give voice to Terracotta to listen the of sound of the Earth ”

Dedolica



The Sound of the Earth

The Dedolica systems are created exclusively with raw materials of the Tuscan territory. The primary element is the *clay from Impruneta*, commonly called Galestro.

It is extracted in open air quarries near Florence and confers to the final Terracotta special characteristics of *structural strength, colour and inalterability at low temperatures*.

The iron oxide determines the particular *nuance of red* in the firing, while the salts and the calcium carbonates give permeability and porosity.

All products are handmade with **Terracotta**, using the centuries-old principles and techniques of the ceramic craftsmanship of **Impruneta**, the same ones used by **Brunelleschi** to build the **cupola** of the **Duomo of Florence**.





The Processing of Terracotta

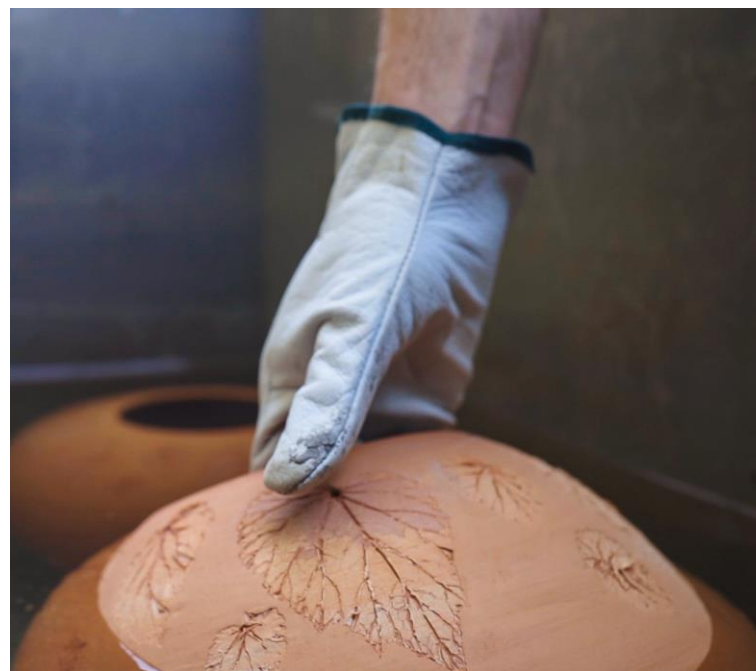
The craftsman shapes the clay with the care and mastery of the centuries-old traditions of the Florentine territory.

In the first phase, a *spherical mold* is created onto which the fresh clay is pressed and its shape is modeled.

Given its high water content, the clay is subjected to natural *drying* under the watchful eye of the craftsman.

The spheres are then finished on the lathe and baked in the oven at *temperatures above 1000°C*.

The baking finally gives the brick *red color* and the aesthetic and resonant uniqueness sought.





Wrought Iron

Structural elements that support the terracotta loudspeakers are entirely made in *wrought iron*.

Master blacksmiths carve, hammer and emboss the raw metal to create the *structural elements* that support the Terracotta loudspeakers.

Technology for High End Solution

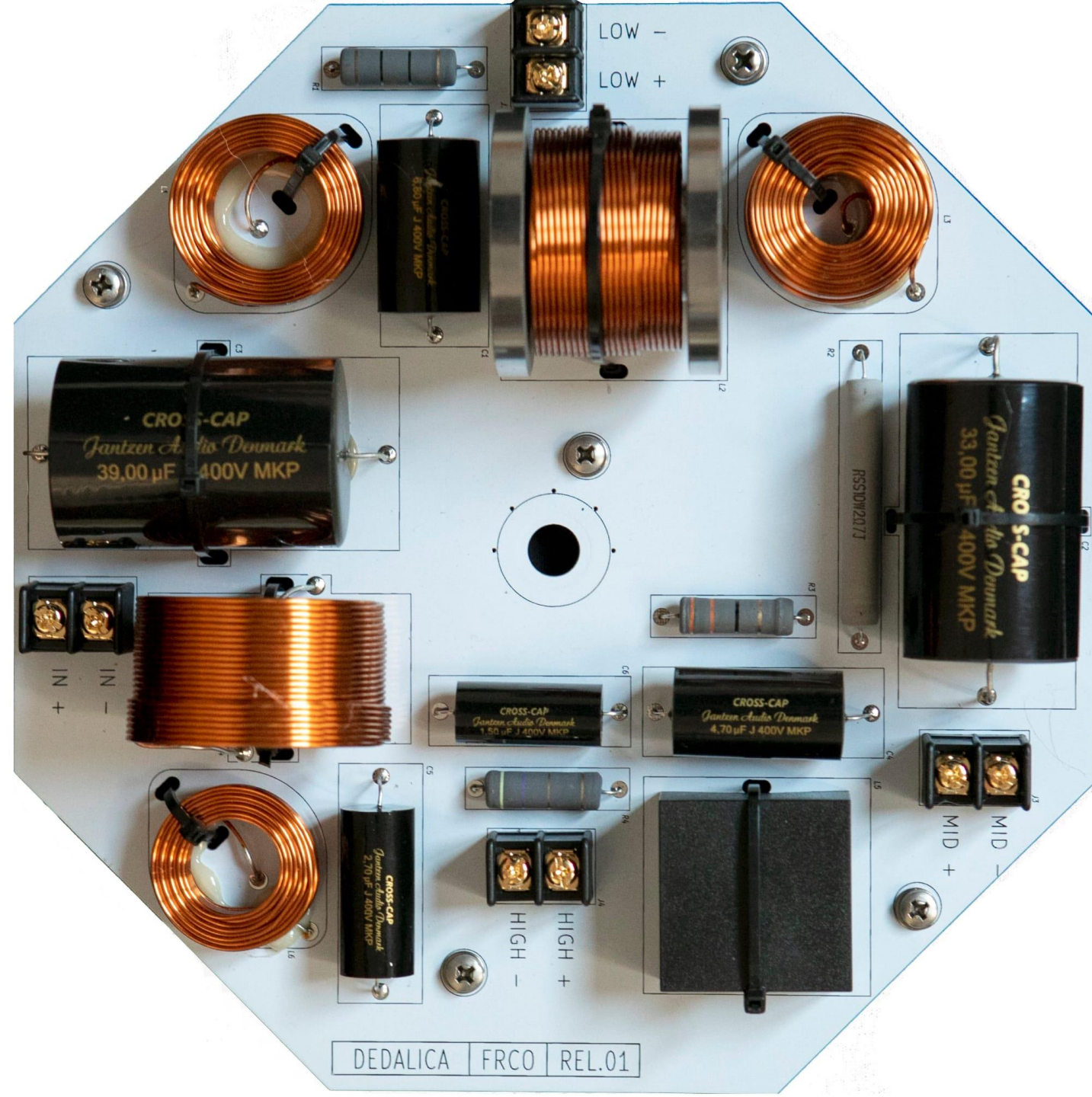
Dedalica innovates discovering Terracotta's acoustic capacity with the latest technology:

The sound of waves propagates spherically. The spherical speaker enclosure guarantees the *highest quality of sound* thanks to the absence of edges that allows to cancel the internal refractions and to absorb concentric sound waves.

Tuning parameters are: thickness, size of the sphere, firing of material, structure of the main frame supporting the loudspeakers.

Cross-over filter are duly designed and developed in house by Dedalica.

Lean and standard production work flow in place for the continuous improvement, targeting best in class efficiency.



*When Art, Design & Sound come
together.....*



*They compose a symphony of
the senses...*





*More than Sound... More than Design..
Dedalica shapes emotions...*



*No limits to customization... Only
the harmony of your space...*





Dedalica Collection

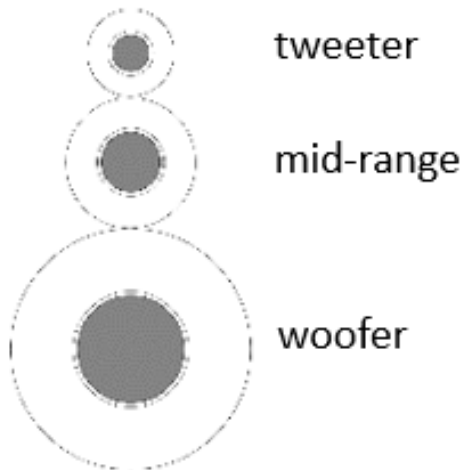
The 3 Vie System

The 3 Vie system consists in **three spherical diffusers** fully integrated. Each sphere reproduces a range of specific frequencies. Each set is equipped with a best in class **cross-over filter** powered by Dedalica.

W: **woofer** at the base able to reproduce balanced and deep low frequencies;

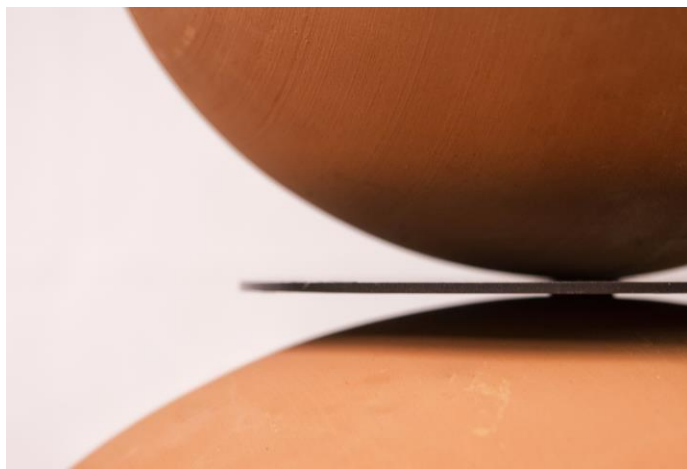
M: **mid-range** centrally placed reproduces the mid frequencies;

T: **tweeter** with the smallest sphere positioned at such a height as to reach the listener's ear for the highest quality of acoustic detail;





TOLOMEA





ARATEA





GEMINEA





Omnidirectional system

The omnidirectional system allows the diffusion of sound in all directions.

The user is able listen the music from any positions enjoying its design in the middle of the room.

Out of all systems, this is the sole developed as a single audio unit only, being able to cover the full space with its sound diffusion





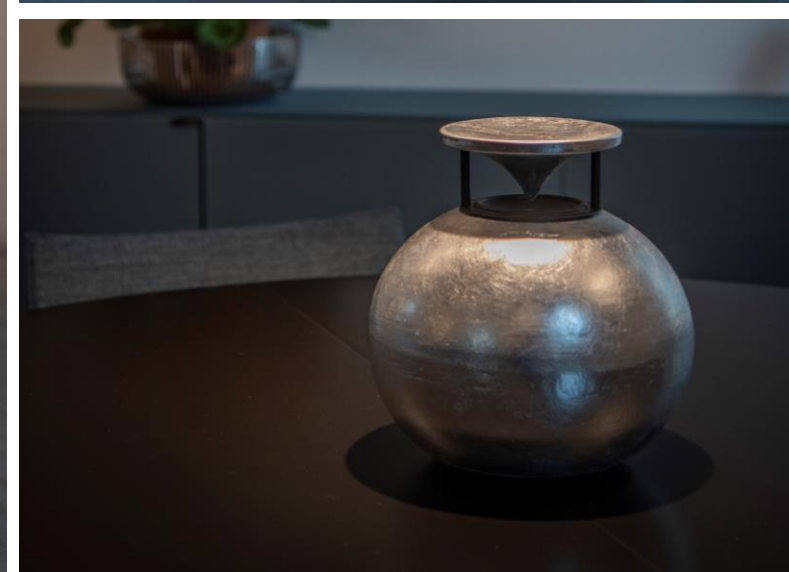
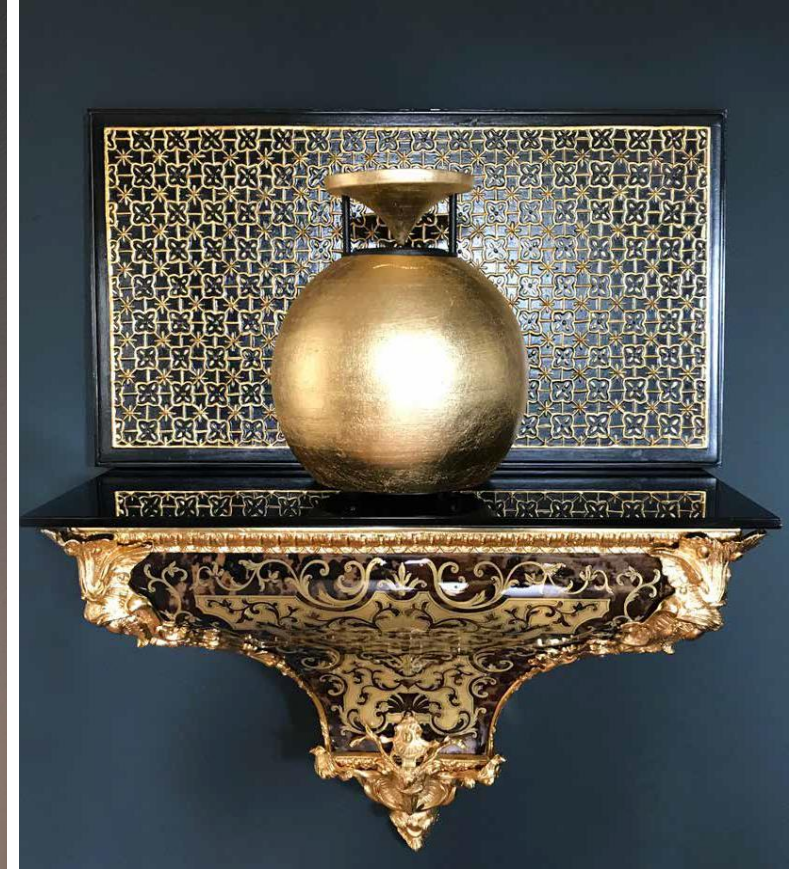
The small size does not limit the acoustic quality. The sound is incredibly clear, natural and thanks to the *design of the top cone*, which spreads the sound at 360°, can be appreciated from any position is listened from.

ZEFIRA

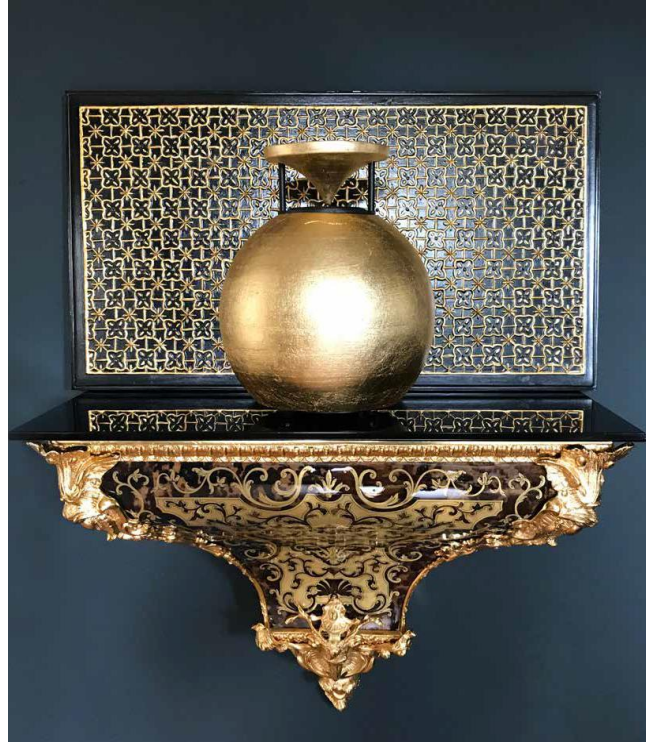
It is a highly versatile and “user friendly” acoustic diffuser due to its small size and light weight. The *long battery life* allows it to be moved easily in different places.

Wireless connectivity with any audio source via bluetooth: from Android smartphones to the Apple devices, from tablets to PC's or other equipment













GEA

An innovative smart-speaker driven by a dedicated app that allows *completely independent multi-room management* for each room via *WIFI* and network cable or even a *completely wireless stereo system* can be configured. You can also connect via *Bluetooth* or *AUX cable*.

The touch of **the back light** gives an elegant effect to the space.







ANFORA

The omnidirectional tower of Dedalica, thought for both indoor and outdoor use, grants the best sound experience with the finest design.

Full Range system

The Full Range system consists of two Terracotta spherical diffusers whose individual loudspeakers are able to reproduce the *complete range of acoustic frequencies, from bass to treble*.

The *two spheres are independent* but should be paired for a perfect stereo performance. Each sphere rests on *pedestals*, there are also *two versions suspended* on the wall or on the ceiling.

In the first case the pedestals are available in two different heights: a high version designed to be placed directly on ground and a bookshelf.

The *spheres are not anchored to the pedestals* but *completely independent and orientable*.

In the *suspended versions* it is also possible to *adjust the height*. The versatility and modularity of this system allow the user a total freedom of orienting sound and application in any living scenario

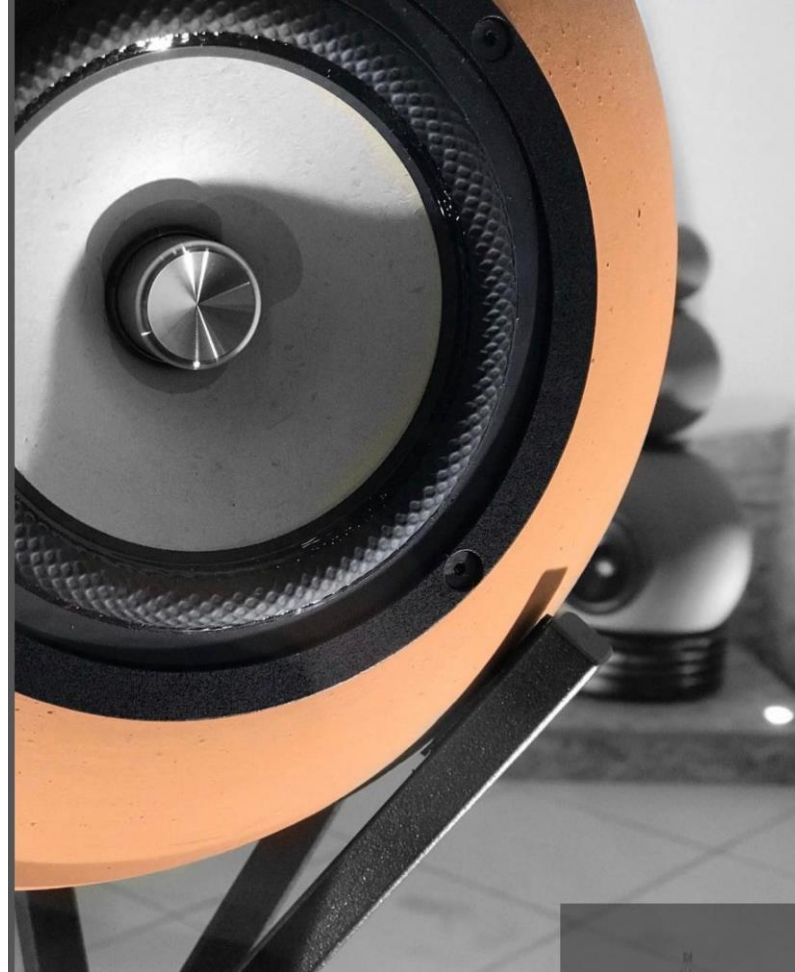




EUCLIDIA HIGH

Euclidia is a Full Range system characterized by a sphere that rests on a wrought iron pedestal in which the signal cables lodge, giving it dynamism and three-dimensionality.

The spheres are not anchored to the pedestals but completely independent and orientable.



EUCLIDIA LOW





TALETIA HIGH



A sphere resting on a ring supported by three rods that rise from the projection of the sphere on the base.

This game of balances and shapes develops from the ground to reach the ideal listening height thanks also to the absence of visible cables.

The spheres are not anchored to the pedestals but completely independent and orientable.





TALETIA LOW







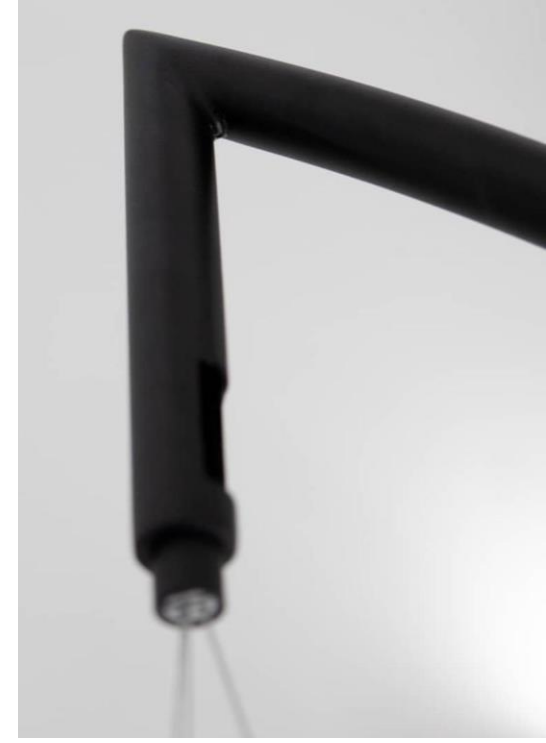
OLIVIA WALL - CEILING

Olivia represents the maximum expression of free use, without needing any support base.

The Terracotta sphere is suspended in air by three ultra-thin steel cables that converge in a single fulcrum placed in the fixing support that allows it to be oriented in all directions.

The speaker literally floats in the air because the audio signal is transmitted by the same suspension cables





OLIVIA FLOOR

Olivia floor allows the maximum freedom of use without the need of any fixing support on the wall or ceiling.

The Terracotta sphere is suspended in air by three ultra-thin steel cables that converge in a single fulcrum placed on top of a *wrought iron curvy frame*, allowing a full flexibility of use.

Sphere can be oriented in all directions and the same suspension cables transmit the audio signal



ATHENA

Athena is composed of a sphere resting on a bracket to be fixed to the wall which offers infinite installation possibilities.

Indoor use



ANTHEA

Anthea is composed of a sphere resting on a concave base machined from solid that allows

it to be *oriented in any direction*. It represents the reduced version of the Taletia model, while maintaining the same level of sound quality, thus offering an excellent compromise between size and acoustic performance

OUTDOOR LINE





ZEIFRA



PANGEA

The outdoor version of the Gea model guarantees high acoustic and aesthetic performance even in outdoor spaces and gardens, ensuring a compliant and homogeneous acoustic diffusion without neglecting the aesthetic side.



TALETIAS

Taletias, like the Taletia Low model, is composed of a sphere resting on a ring supported by three rods; essential lines that integrate perfectly into any outdoor space and gardens.



OLYMPIA

Olympia is composed of a sphere resting on a bracket to be fixed to the wall that offers endless possibilities for installation in any outdoor space and gardens



TAUROS

Tauros is the Dedalica subwoofer line made with simple and essential shapes so that it can be integrated with all Fullrange speaker models.



ANFORA

The omnidirectional tower of Dedalica, thought for both indoor and outdoor use, grants the best sound experience with the finest design.

SUB - WOOFER





BALA SYSTEM

2.1 SPEAKERS + SUBWOOFER

It is the fusion of Anthea and Tauros, where the limpid and crystalline sound of Anthea meets the depth of the bass of Tauros

BALA ONE SYSTEM

2.1 SPEAKERS + SUBWOOFER

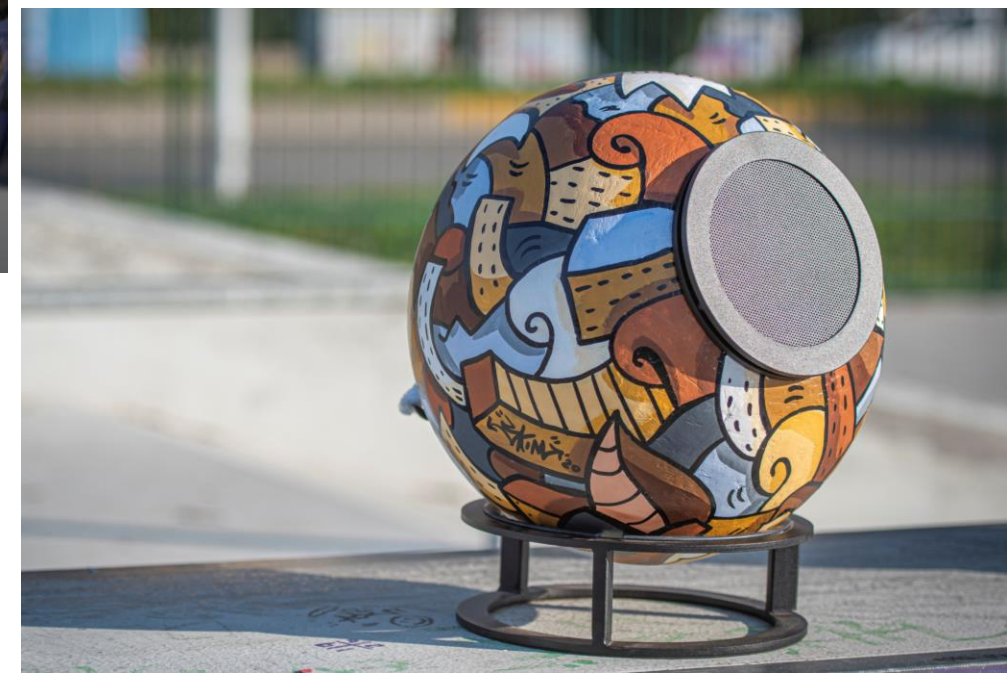


It is the fusion between Taletia Low and Tauros where the rich and detailed sound of Taletia is enriched by the fullbodied and deep bass of Tauros



SPECIAL COLLECTION





The pictorial style of the international Florentine street artist SKIM.

SKIM

A first version plays on brown, ocher, gray colors and recalls an ancient sea landscape.

In the other, the concept of nature with purple, green and brown colors is enhanced





THE SOUND OF LEAVES

NABLA

Multifaceted extensions, perfection of details and harmony of effects, make up unique and precious works of art design, which Marzia Ratti

Marmorino marble effect - metallic pigments - mold with real leaves, mainly ginkgo bilboa

RESIN CUSTOMIZATION







Dedalica is finished in multicolor pigmented resin by Fabrizio di Domenico.

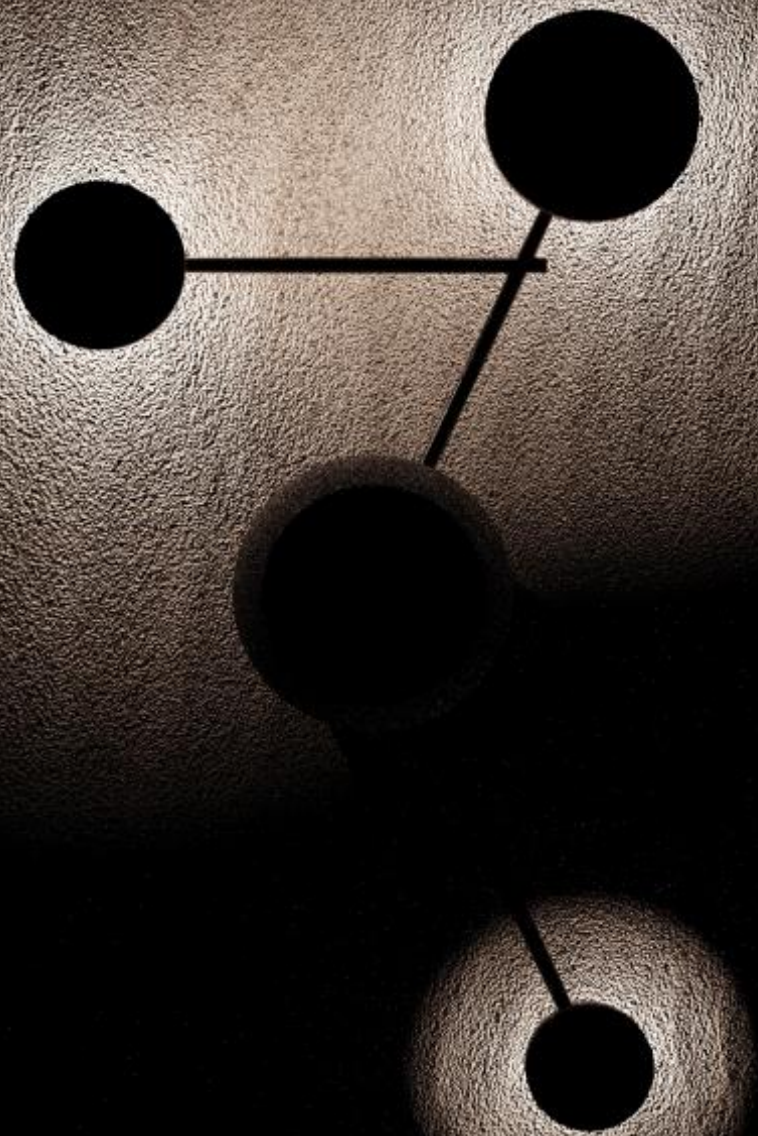


THE SOUND OF LIGHT

LIGHTING WALL SPEAKERS

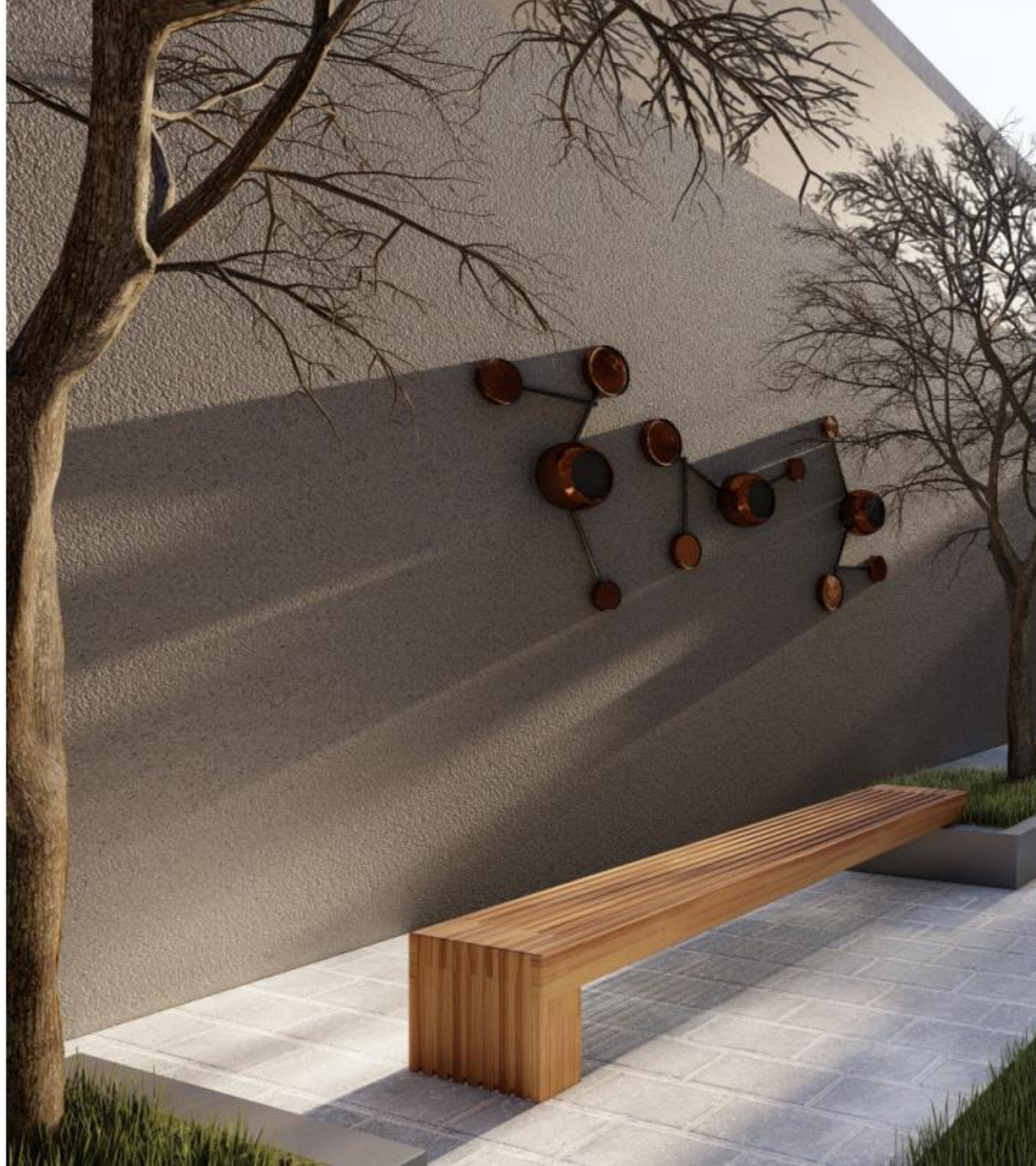
pedalico

SYNAPSI

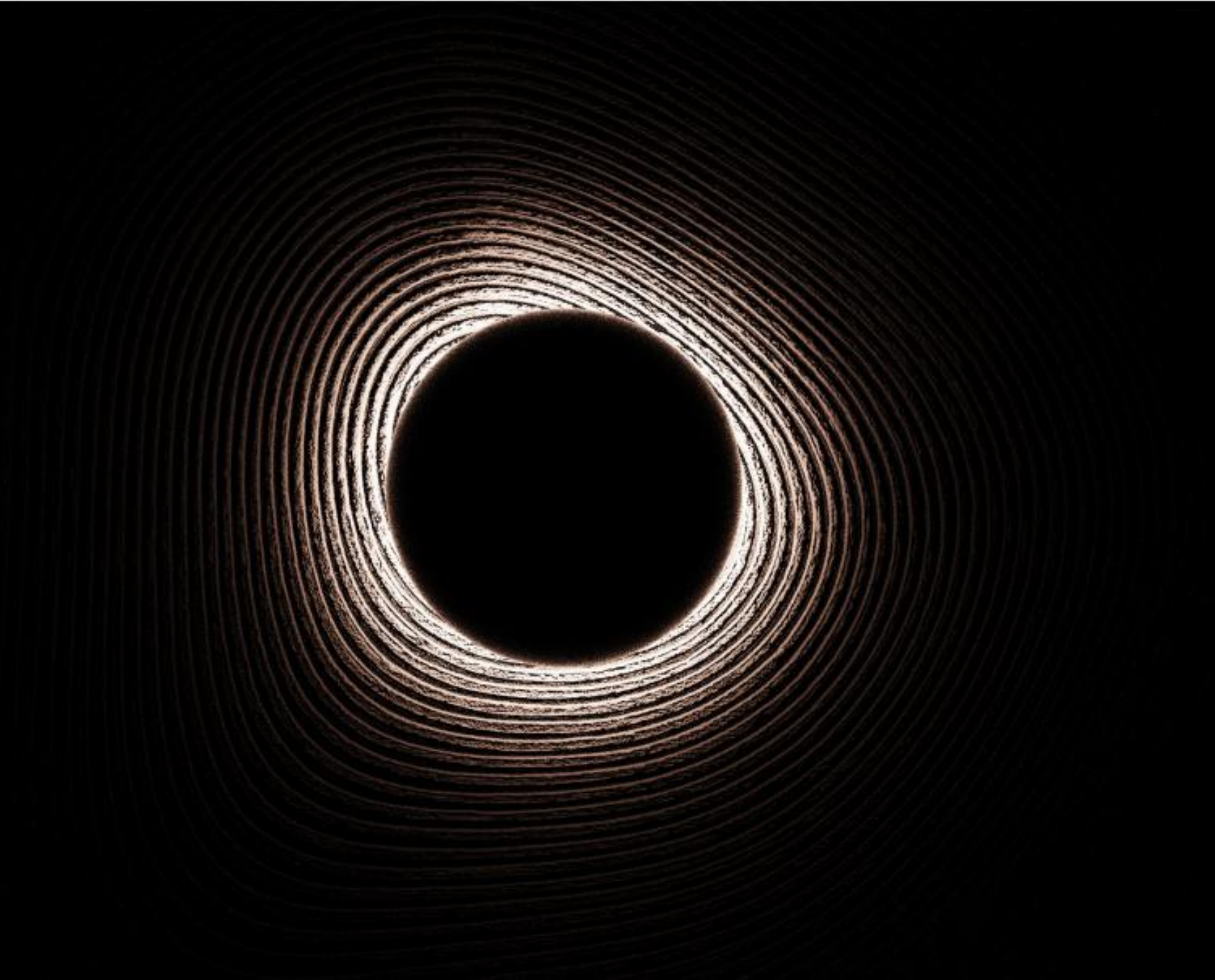


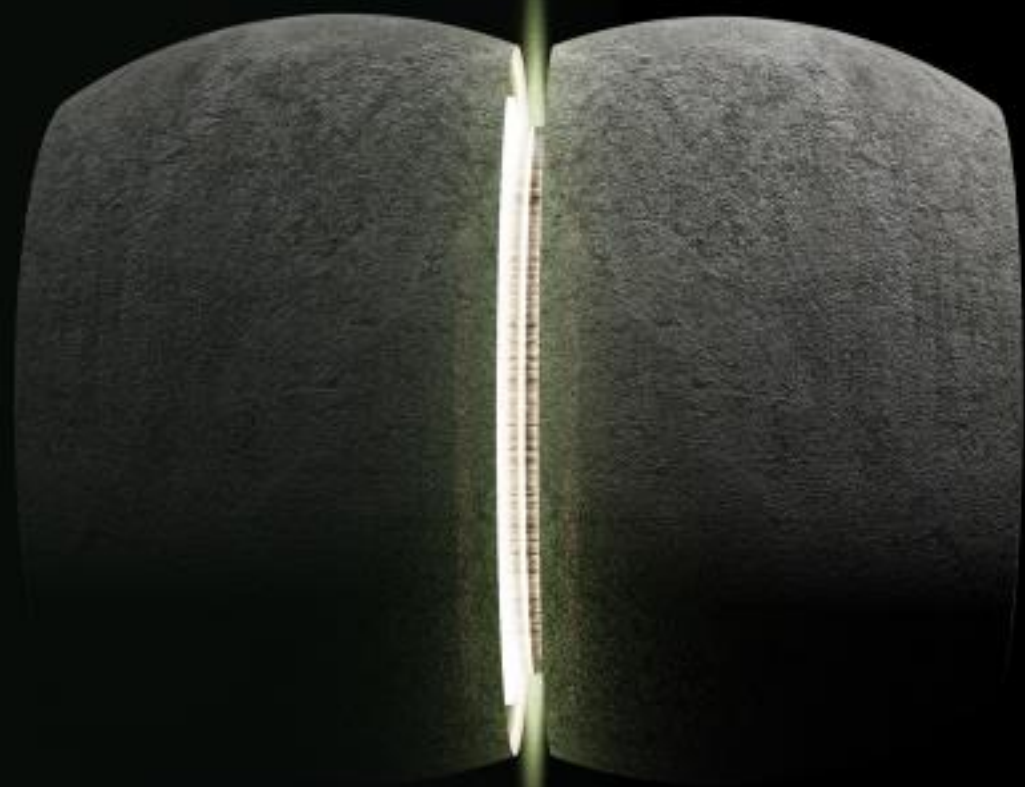






ECLYPSE





- ECLYPSE.S





Eclipse, a backlit omnidirectional speaker, ceiling & wall installation

Indoor & outdoor..

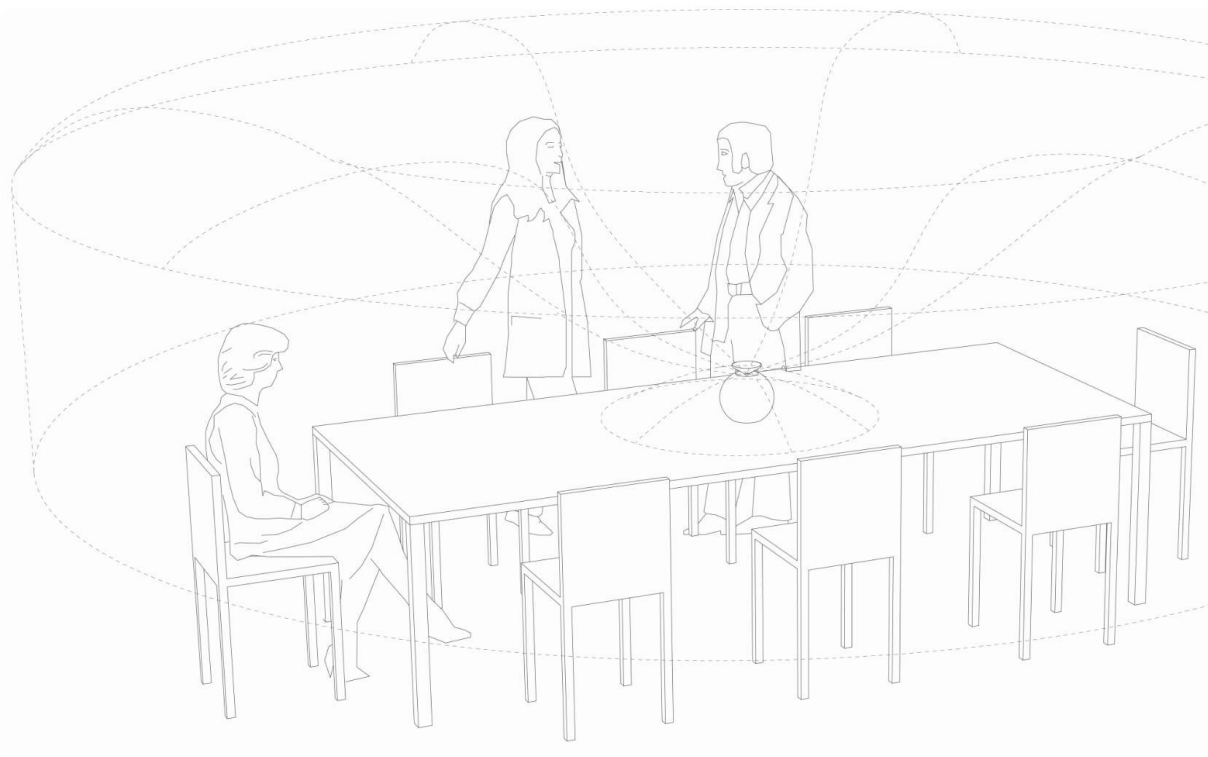


LIGHTING ZEFIRA

A plexiglass omnidirectional cone gives a light touch to your space.

SERVICES

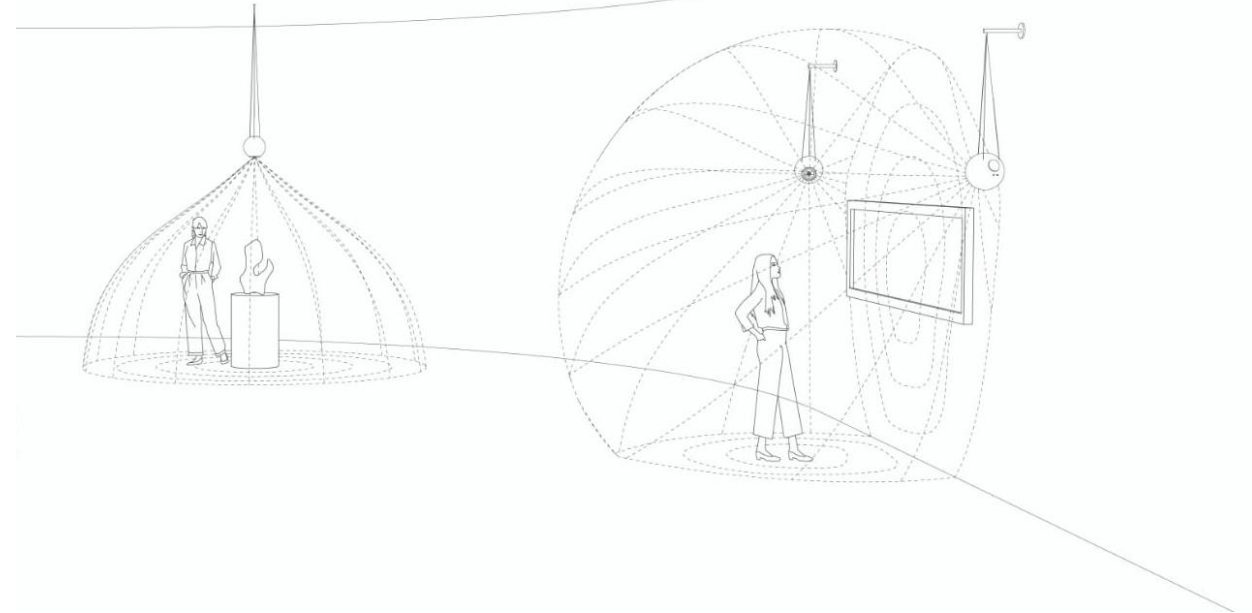




Audio System Design

Hambient Rendering

Audio System Installation



Quality and reliability

3 Years of warranty on electronic parts

Life-warranty on Terracotta elements

100% Made in Italy



ART IN TECHNOLOGY
combination of ancient manufacture with latest technology



"I've never seen a sound that looked like that"

Terry Pratchett